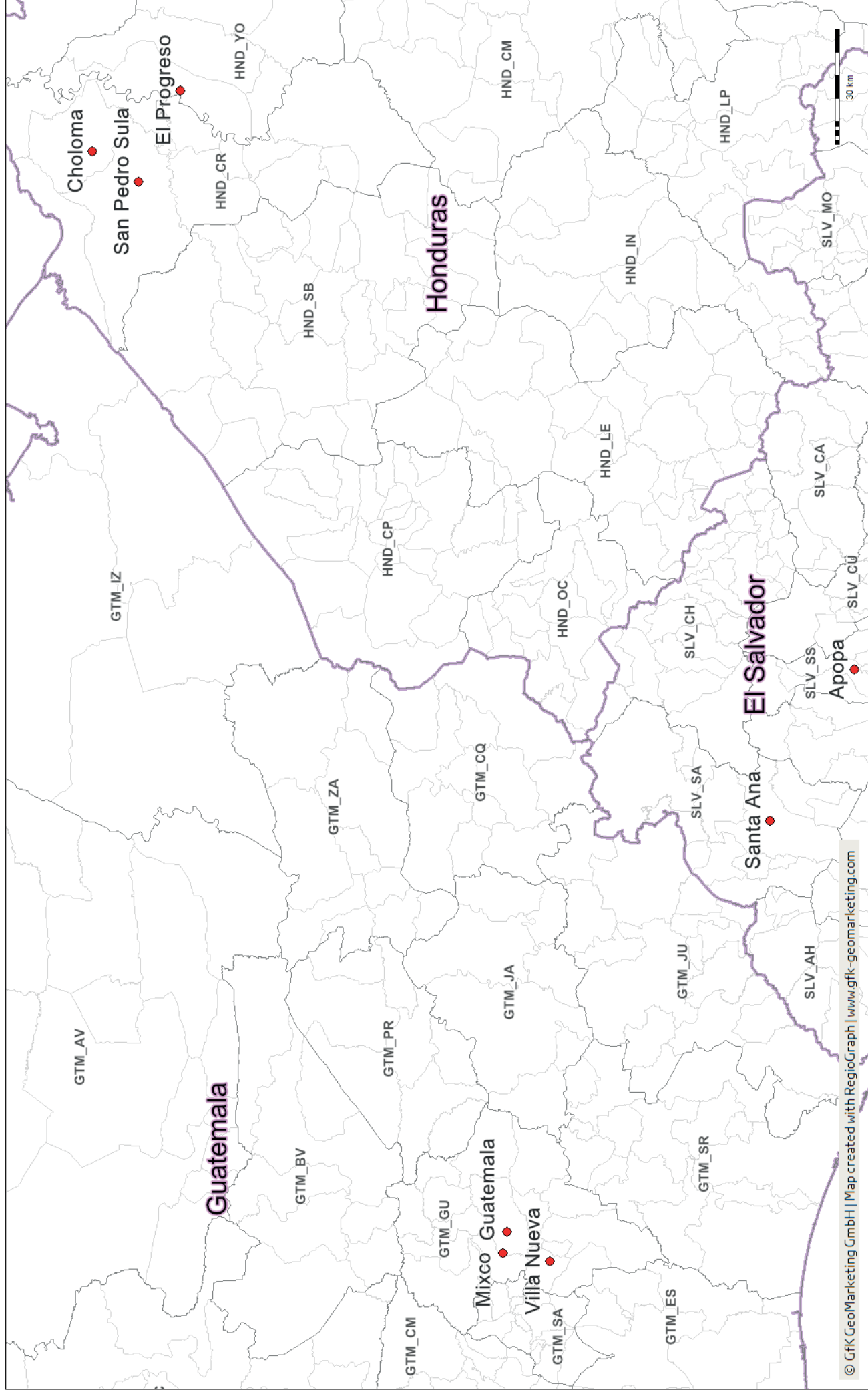
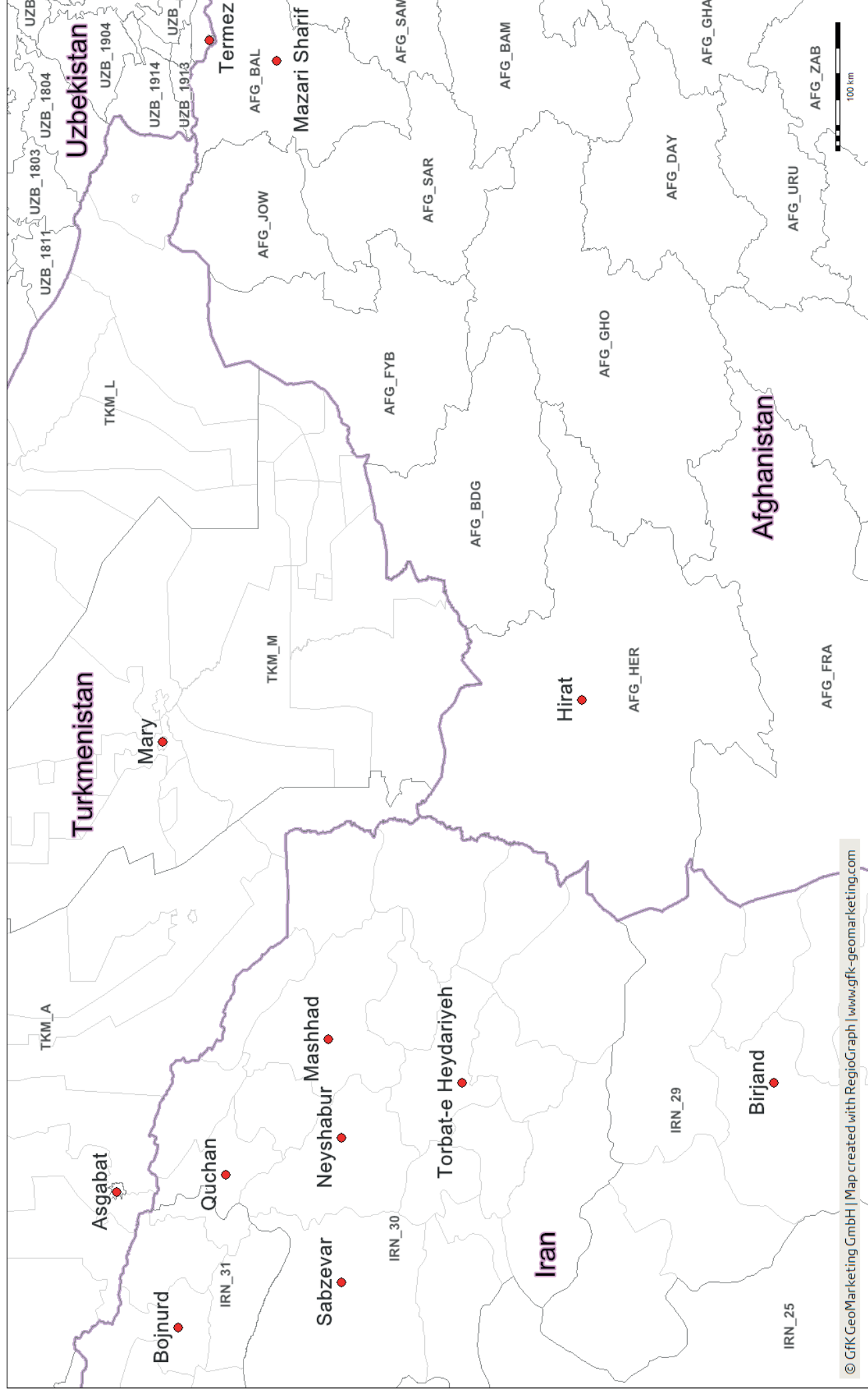


DIGITAL MAPS CRESTA

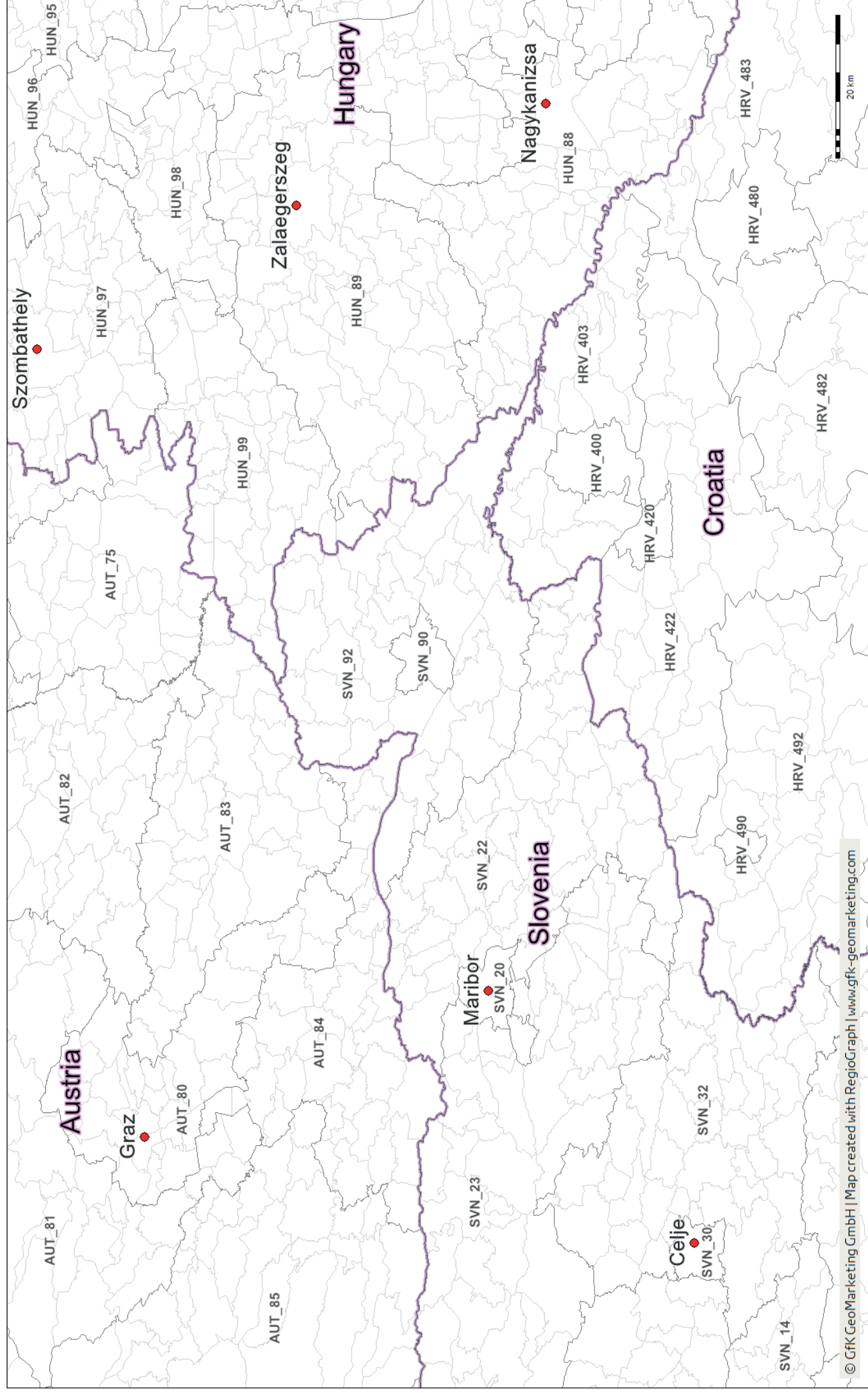
CRESTA LowRes and HighRes America



CRESTA LowRes and HighRes Central Asia



CRESTA LowRes and HighRes Europe



Layer-/Filename	Object type*	Type	No. of objects	Off. code**	Nat. lang.***
Available for all formats (RegioGraph, ESRI/shape, MapInfo/tab): 5 layers					
Cresta LowRes 2013	Cresta (level 1)	polygon	4697	✓	✓
Cresta HighRes 2013	Cresta (level 2)	polygon	251528	✓	✓
Cresta HighRes points 2013	Cresta (level 2)	point	251528	✓	✓
Cresta zones 2010	Cresta (level 1)	polygon	42739	✓	✓
Cresta subzones 2010	Cresta (level 2)	polygon	243	✓	✓
World states	Admin0(level 0)	polygon	252	✓	
World cities	topogr	point	5583		

ASSIGNMENT TABLES

CRESTA zones 2010 - 2013 assignment table for continents

This Excel file includes two work sheets for each continent: one showing the assignment of 2010 zones to the 2013 HighRes and LowRes zones, and one showing the assignment of the subzones. The assignment has been done by adding the attributes of the underlying 2010 zones/subzones to the centroids of the 2013 HighRes and LowRes zones.

Assignment table postal-HighRes zones

Assignment table postal-LowRes zones

Assignment table admin-HighRes zones

Assignment table admin-LowRes zones

These four Excel work sheets make it possible to assign GfK GeoMarketing's most detailed postcodes and administrative units to the 2013 CRESTA HighRes and LowRes zones. As the administrative and postal areas do not correlate perfectly with the CRESTA zones, the tables provide percentages that indicate the amount of overlap between the partial polygons, thus enabling users to apportion values accordingly.

example: field map of the

Assignment table postal - HighRes zones

ISO2	ISO 3166-1 alpha-2 code
ISO3	ISO 3166-1 alpha-3 code
COUNTRY	country name
post code	post code
Name	name of postcode area
Name ASCII	name of postcode area (ASCII)
No of parts	number of parts (sections) of the postcode
% of pc in HighRes	total percentage of postcode in HighRes zone
HighRes ID	ID of HighRes CRESTA zone
HighRes description	name of HighRes CRESTA zone
No of parts	number of parts (sections) of the HighRes CRESTA zone
% of HighRes in pc	total percentage of HighRes CRESTA zone in postcode area
CRESTA vintage	CRESTA vintage
post code vintage	post code vintage
HighRes edit notes	HighRes edit notes

1. GfK World maps + CRESTA

Includes following GfK Maps:

- GfK World Maps
- GfK CRESTA 2013 (CRESTA HighRes and LowRes areas, CRESTA HighRes points)
- CRESTA 2010 (CRESTA Zones and Subzones)

Includes following assignment tables:

- CRESTA zones 2010 - 2013 Assignment table continent wise
- Assignment tables Postal - HighRes / LowRes, Admin - HighRes / LowRes

2. GfK Continent/Country maps + CRESTA

Includes same deliverables as 1. GfK World maps + CRESTA, but only for selected continents/countries

3. GfK CRESTA zones

Includes following GfK Maps:

- GfK CRESTA 2013 (CRESTA HighRes and LowRes areas, CRESTA HighRes points)
- CRESTA 2010 (CRESTA Zones and Subzones)

Includes following assignment tables:

- CRESTA zones 2010 - 2013 Assignment table continent wise
- Assignment tables Postal - HighRes / LowRes, Admin - HighRes / LowRes

4. GfK CRESTA LowRes zones

Includes following GfK Maps:

- GfK CRESTA LowRes 2013
- CRESTA 2010 (CRESTA Zones and Subzones)

Includes following assignment tables:

- CRESTA zones 2010 - 2013 Assignment table continent wise
- Assignment tables Postal - LowRes, Admin - LowRes

5. GfK CRESTA Assignment tables

Includes following assignment tables:

- CRESTA zones 2010 - 2013 Assignment table continent wise
- Assignment tables Postal - HighRes / LowRes, Admin - HighRes / LowRes

NUMBER OF CRESTA ZONES PER COUNTRY



EUROPE

COUNTRY	LowRes	HighRes
Albania	36	373
Austria	77	2194
Belarus	76	3836
Belgium	9	1146
Bosnia and Herzegovina	13	687
Bulgaria	89	4688
Croatia	68	861
Cyprus	6	1121
Czech Republic	61	3369
Denmark	85	1081
Estonia	50	5370
Finland	100	3039
France	97	6053
Germany	95	8213
Greece	70	1089
Hungary	83	3055
Ireland	26	
Italy	93	4596
Kosovo	7	37
Latvia	28	693
Liechtenstein	1	13
Lithuania	93	16367
Luxembourg	1	78
Macedonia	17	84
Moldova	44	1266
Montenegro	21	
Netherlands	90	4042
Norway	19	3076
Poland	99	20671
Portugal	79	507
Romania	47	14166
Serbia	25	168
Slovakia	24	1461
Slovenia	22	469
Spain	54	10973
Sweden	290	9750
Switzerland	26	3194
Turkey	81	957
Ukraine	27	682
United Kingdom	124	9512

ASIA

COUNTRY	LowRes	HighRes
Afghanistan	34	
Armenia	11	42
Azerbaijan	78	
China	62	2425
East Timor	13	65
Georgia	12	79
India	34	26868
Indonesia	33	497
Iran- Islamic Republic of	30	341
Israel	7	71
Japan	47	1957
Jordan	12	51
Kashmir and Jammu	36	
Kazakhstan	16	198
Kyrgyzstan	9	50
Lebanon	8	26
Malaysia	16	105
Northern Mariana Islands	4	
Pakistan	6	137
Palestine	1	
Papua New Guinea	20	87
Philippines	81	
Qatar	7	90
Russia	80	2504
Saudi Arabia	13	118
Singapore	28	81
South Korea	16	247
Sri Lanka	9	25
Taiwan	23	359
Tajikistan	76	
Thailand	76	927
Turkmenistan	6	63
Uzbekistan	185	
Vietnam	64	

AUSTRALIA AND NEW ZEALAND

COUNTRY	LowRes	HighRes
Australia		2646
New Zealand		1066

NUMBER OF CRESTA ZONES PER COUNTRY



AMERICA

COUNTRY	LowRes	HighRes
Anguilla	1	14
Antigua and Barbuda	1	8
Argentina	24	531
Aruba	1	8
Bahamas	32	
Barbados	1	11
Belize	6	31
Bermuda	1	11
Bolivia	112	
Bonaire, Sint Eustatius and Saba	3	
Brazil	27	5565
British Virgin Islands	5	
Canada	20	1635
Cayman Islands	6	
Chile	15	345
Colombia	33	1122
Costa Rica	81	473
Cuba	15	169
Curaçao	1	
Dominica	10	
Dominican Republic	32	154
Ecuador	25	224
El Salvador	14	262
Grenada	7	
Guadeloupe	2	34
Guatemala	22	330
Haiti	10	42
Honduras	18	298
Jamaica	1	60
Mexico	32	2456
Montserrat	3	
Nicaragua	17	153
Panama	12	75
Peru	25	195
Puerto Rico	78	176
Saint Barthélemy	1	
Saint Kitts and Nevis	1	14
Saint Lucia	1	10
Saint Martin	1	
Saint Vincent and the Grenadines	6	
Sint Maarten (Dutch Part)	1	
Trinidad and Tobago	1	21
Turks and Caicos Islands	13	45
United States (USA)	51	41138
US Virgin Islands	3	20
Venezuela	25	336

AFRICA

COUNTRY	LowRes	HighRes
Algeria	48	
Egypt	29	343
Kenya	8	71
Martinique	1	30
Mauritius	12	
Morocco	15	77
Nigeria	37	774
Reunion	4	37
South Africa	95	3839
South Sudan	10	
Sudan	15	
Tanzania	26	129
Uganda	80	168
United Arab Emirates	7	
Western Sahara	7	32

EXPLANATION OF TERMS

Object type*:

admin (level 0-5)

This layer depicts the administrative and political boundaries of the country in question. Level "0" corresponds to the country as a whole, with an increasing level of detail for each successive level (e.g., 2, 3 and so on).

postal (1-7 digits)

This layer depicts the postcode divisions of the country in question. "1" refers to one-digit postcodes, "2" to two-digit postcodes, and so on. The higher the number, the more detailed the depiction of the postcodes.

TT

This layer is based on TomTom cartography.

Off. code**:

This layer contains labels featuring official regional codes - for example, the official designators of postcodes used by the national postal organization.

Nat. lang.*** :

In addition to ASCII-based labels, this layer contains labels in the language (and associated special characters) of the country in question. For some countries local labels are not properly shown in MapInfo, unless the appropriate font is installed or the system's regional settings have been changed to the country in question.

REFERENCES

Below are details on the sources on which the individual country datasets are partially based:

Argentina: (I) Instituto Geográfico Nacional de la República Argentina <http://www.ign.gob.ar>
(II) Secretaría de Gobierno de Energía <http://datos.minem.gob.ar/>

Australia: Australian Bureau of Statistics, <http://www.abs.gov.au>, Incorporates or developed using G-NAF ©PSMA Australia Limited licensed by the Commonwealth of Australia under the Open Geo-coded National Address File (G-NAF) End User Licence Agreement.

Austria: Bundesanstalt Statistik Österreich, <http://data.statistik.gv.at>

Brazil: Portal Brasileiro de Dados Abertos, dados.gov.br

Belgium: Statistics Belgium, <https://statbel.fgov.be>

Canada: Statistics Canada, <https://statcan.gc.ca>

Chad: OCHA Chad, <https://data.humdata.org>

Colombia: National Administrative Department of Statistics: www.dane.gov.co

Czech Republic: Český statistický úřad, <https://www.czso.cz>

Denmark: Danish Geodata Agency, DAGI - Danish Administrative and Geographical Boundaries, Matrikelkortet / The Cadastral Map and Kort10 (vector), all April 2015, <http://download.kortforsyningen.dk/>

Democratic Republic of the Congo: Référentiel Géographique Commun, <http://www.rgc.cd>

Faroe Islands: The Environment Agency, Faroe Islands, <http://www.us.fo>

Finland: The National Land Survey of Finland, <http://www.maanmittauslaitos.fi>

France: IGN France, <https://www.data.gouv.fr>

French Guiana: Institut national de l'information géographique et forestière (IGN), <http://professionnels.ign.fr>

Estonia: Republic of Estonia Land Board, July 2014, <http://www.maaamet.ee/>

Ecuador: National Institute of Statistics and Censuses INEC, <http://www.ecuadorencifras.gob.ec>

Germany: (I) Bayerische Vermessungsverwaltung, <http://www.geodaten.bayern.de/>

(II) Geoportal Baden-Württemberg, <http://www.geoportal-bw.de/>

(III) Senatsverwaltung für Stadtentwicklung und Umwelt Berlin, <http://www.stadtentwicklung.berlin.de/>

(IV) Geoportal Rheinland Pfalz, <http://www.geoportal.rlp.de/>

(V) Open.NRW – Das Open Government Portal für das Land Nordrhein-Westfalen, <https://open.nrw/>

Greenland: Danish Geodata Agency, DAGI - Danish Administrative and Geographical Boundaries, Matrikelkortet / The Cadastral Map and Kort10 (vector), all April 2015, <http://download.kortforsyningen.dk/>

Guadeloupe: Institut national de l'information géographique et forestière (IGN), <http://professionnels.ign.fr>

Guatemala: Open Energy Information, <http://en.openei.org/>

Guinea: International Organization for Migration, <https://data.humdata.org/>

Haiti: U.S. Census Bureau, <https://www.census.gov>

Honduras: Open Energy Information, <http://en.openei.org>

Iceland: National Land Survey of Iceland, <http://www.lmi.is>

India: MapmyIndia, <http://www.mapmyindia.com>

Ireland: (I) Ordnance Survey Ireland (OSI), <http://www.osi.ie>

(II) DATA.GOV.IE, <http://data.gov.ie>

Japan: Statistics of Japan, <https://www.e-stat.go.jp>

Libya: OCHA Lybia, <https://data.humdata.org>

Martinique: Institut national de l'information géographique et forestière (IGN), <http://professionnels.ign.fr>

Mexico: "Códigos Postales, coordenadas y colonias" published by Correos de Mexico, <https://datos.gob.mx>

New Zealand: (I) This work is based on/includes Stats NZ's data which are licensed by Stats NZ for reuse under the Creative Commons Attribution 4.0 International licence.

(II) LINZ - Land Information New Zealand data, <https://data.linz.govt.nz/>

Netherlands: NGR Nationaal Georegister, <http://nationaalgeoregister.nl>

Nigeria: The Humanitarian Data Exchange, <https://data.humdata.org>

Norway: Kartverket, www.kartverket.no

Poland: Centralnego Ośrodka Dokumentacji Geodezyjnej Kartograficznej, <http://www.codgik.gov.pl>

Philippines: Philippines Statistics Authority (PSA)

Portugal: Instituto Geográfico Português, <http://www.igeo.pt/>

Romania: National Agency for Cadastre and Land Registration, <http://data.gov.ro>

Rwanda: NISR Geodata Portal, <https://data.humdata.org>

Slovenia: Statistical Office of the Republic of Slovenia, <http://www.stat.si/>

South African: (I) Municipal Demarcation Board, <http://www.demarcation.org.za/>

(II) National Geospatial Information, <http://www.ngi.gov.za/>

South Korea: DATA.GO.KR, <https://data.go.kr/>

Switzerland: (I) Swiss federal authorities (Federal Office of Topography swisstopo, <http://www.swisstopo.admin.ch/> and Federal Directorate of

(II) Cadstral Surveying, <http://www.cadastre.ch>)

Taiwan: National Land Surveying and Mapping Center, <https://data.gov.tw>

United Kingdom: Ordnance Survey, <http://www.ordnancesurvey.co.uk>

Zambia: U.S. Census Bureau, <https://www.census.gov>

WORLDWIDE DIGITAL MAPS

You can use geomarketing software, GIS, BI and CRM systems to visualize and analyze your company data on digital maps. In just a few steps, you can extract insights from your data that would otherwise not be apparent. GfK GeoMarketing's worldwide map collection is the ideal foundation for carrying out these cartographic analyses. Select from among 240 country map editions to support your international planning. All maps are created by our own in-house team of cartographers and fit together seamlessly, without gaps or overlaps.

HIGHEST QUALITY STANDARDS

- Comprehensively researched
- Regularly updated
- High-resolution, gapless vector maps
- Available in all standard data formats, including ESRI ArcGIS (*.shp), RegioGraph (*.lay), MapInfo (*.tab), Oracle, GeoDatabase (*.gdb).

UPDATE PRICE

If your map edition is not older than the most recent two releases, you can update to the current version for 50% off the full price.

ONGOING SAVINGS OF 50%!

Subscribe and save 50%, which already applies to your first order. We'll then automatically send you new map versions upon their release to ensure that you are always working with the latest products.

Below you'll find a summary of GfK GeoMarketing's complete map offering. We offer the world's largest collection of vector maps of postal and administrative boundaries. The map layers included in each country edition can be found in the corresponding tabular overview.

SELECT YOUR EDITION

▪ Country editions

Looking for a map of a specific country? You can individually order country-specific map editions. These editions are priced in three categories, beginning at €500.

▪ Continent editions

The continent edition contains all maps of the countries located in the corresponding continent and is available for an attractive bundled rate. For each country, you'll receive all available postcode and administrative maps as well as individual map layers. All layers include complete German, international and local place-name attributions.

▪ World Map Edition

The World Map Edition is a combination of the individual continent editions and as such is one of the largest collections of vector-based administrative and postcode maps available on the market. The World Map Edition offers global coverage. Individual countries are saved in separate files. All map layers fit together seamlessly with those of neighboring countries, without gaps or overlaps.

DIGITAL MAP AVAILABILITY



EUROPE	Admin. level 0	Admin. level 1	Admin. level 2	Admin. level 3	Admin. level 4	Admin. level 5	Admin. level 6	1-digit postcodes	2-digit postcodes	3-digit postcodes	4-digit postcodes	5-digit postcodes	6-digit postcodes	City points
Albania	✓	✓	✓					✓		✓				✓
Austria	✓	✓	✓	✓	✓			✓		✓				✓
Belarus	✓	✓	✓					✓					✓	✓
Belgium	✓	✓	✓	✓	✓	✓		✓		✓				✓
Bosnia-Herzegovina	✓	✓	✓	✓				✓			✓			✓
Bulgaria	✓	✓	✓	✓				✓		✓				✓
Croatia	✓	✓	✓					✓			✓			✓
Cyprus	✓	✓	✓					✓		✓				✓
Czech Republic	✓	✓	✓	✓				✓			✓			✓
Denmark ¹	✓	✓	✓	✓				✓		✓				✓
Estonia	✓	✓	✓	✓				✓			✓			✓
Finland	✓	✓	✓	✓	✓			✓			✓			✓
France ²	✓	✓	✓	✓	✓	✓	✓	✓			✓			✓
Germany	✓	✓	✓	✓	✓		✓	✓			✓			✓
Greece	✓	✓	✓	✓	✓	✓		✓			✓			✓
Hungary	✓	✓	✓	✓	✓			✓		✓				✓
Iceland	✓	✓	✓	✓				✓	✓					✓
Ireland	✓	✓	✓	✓				✓	✓					✓
Italy ³	✓	✓	✓	✓				✓			✓			✓
Kosovo	✓	✓	✓					✓						✓
Latvia	✓	✓	✓	✓				✓		✓				✓
Lithuania	✓	✓	✓	✓				✓			✓			✓
Luxembourg	✓	✓	✓	✓				✓		✓				✓
Macedonia	✓	✓	✓					✓		✓				✓
Malta	✓	✓	✓	✓					✓					✓
Moldova	✓	✓	✓					✓		✓				✓
Montenegro	✓	✓						✓			✓			✓
Netherlands	✓	✓	✓	✓	✓			✓		✓		✓		✓
Norway ⁴	✓	✓	✓	✓	✓	✓		✓		✓				✓
Poland	✓	✓	✓	✓	✓			✓			✓			✓
Portugal	✓	✓	✓	✓	✓			✓		✓				✓
Romania ⁵	✓	✓	✓					✓				✓ ⁵		✓
Serbia	✓	✓	✓	✓				✓			✓			✓
Slovakia	✓	✓	✓	✓				✓			✓			✓
Slovenia	✓	✓	✓	✓	✓			✓		✓				✓
Spain ⁷	✓	✓	✓	✓				✓			✓			✓
Sweden	✓	✓	✓	✓				✓			✓			✓
Switzerland ⁸	✓	✓	✓	✓				✓		✓		✓		✓
Turkey ⁹	✓	✓	✓	✓ ⁹				✓			✓			✓
Ukraine	✓	✓	✓					✓	✓		✓ ¹¹			✓
United Kingdom ⁶	✓	✓	✓					✓	✓		✓ ⁶			✓
United Kingdom ¹⁰	✓	✓	✓					✓	✓		✓ ⁶	✓ ¹⁰		✓

City points are categorized by number of inhabitants.

¹) Denmark includes Faroe Islands and Greenland

²) France includes Monaco

³) Italy includes Vatican City State and San Marino

⁴) Norway includes Svalbard and Jan Mayen

⁵) Romania: coverage of 4-digit postcode areas included for larger cities

⁶) United Kingdom: postcode sectors

⁷) Spain includes Andorra and Gibraltar

⁸) Switzerland includes Liechtenstein

⁹) Turkey: The districts and neighborhood map is a combined map of districts and neighborhoods

¹⁰) UK: Postcode unit points are not available for RegioGraph

¹¹) Ukraine: 5-digit postcodes are only available for selected cities

Get a bonus when you order maps in the RegioGraph format!

Maps ordered in the *.lay format (RegioGraph) include purchasing power data for no additional charge!

DIGITAL MAP AVAILABILITY



AFRICA	Admin. level 0	Admin. level 1	Admin. level 2	Admin. level 3	Admin. level 4	Admin. level 5	1-digit postcodes	2-digit postcodes	3-digit postcodes	4-digit postcodes	5-digit postcodes	6-digit postcodes	City points
Algeria	✓	✓					✓						✓
Angola	✓	✓	✓										✓
Benin	✓	✓	✓										✓
Botswana	✓	✓	✓										✓
Burkina Faso	✓	✓	✓										✓
Burundi	✓	✓	✓										✓
Cameroon	✓	✓	✓										✓
Cape Verde	✓	✓	✓				✓						✓
Central African Rep.	✓	✓	✓										✓
Chad	✓	✓	✓										✓
Comoros	✓	✓											✓
Congo	✓	✓											✓
Democratic Rep. of Congo	✓	✓	✓	✓									✓
Djibouti	✓	✓	✓										✓
Egypt	✓	✓	✓					✓					✓
Equatorial-Guinea	✓	✓	✓										✓
Eritrea	✓	✓	✓										✓
Ethiopia	✓	✓	✓	✓									✓
Gabon	✓	✓	✓										✓
Gambia	✓	✓	✓										✓
Ghana	✓	✓	✓										✓
Guinea	✓	✓	✓	✓									✓
Guinea-Bissau	✓	✓	✓										✓
Ivory Coast	✓	✓	✓	✓									✓
Kenya	✓	✓	✓			✓		✓					✓
Lesotho	✓	✓	✓										✓
Liberia	✓	✓	✓					✓					✓
Libya	✓	✓											✓
Madagascar	✓	✓	✓			✓							✓
Malawi	✓	✓	✓										✓
Mali	✓	✓	✓										✓
Mauritania	✓	✓	✓										✓
Mauritius	✓	✓				✓							✓
Mayotte	✓	✓									✓		✓
Morocco	✓	✓	✓	✓		✓	✓						✓
Mozambique	✓	✓	✓				✓						✓
Namibia	✓	✓											✓
Niger	✓	✓	✓										✓
Nigeria	✓	✓	✓					✓					✓
Reunion	✓	✓	✓								✓		✓
Rwanda	✓	✓	✓	✓									✓
Sao Tome and Principe	✓	✓	✓										✓
Senegal	✓	✓	✓				✓						✓
Seychelles	✓	✓											✓
Sierra Leone	✓	✓	✓										✓
Somalia	✓	✓	✓										✓
South Africa	✓	✓	✓	✓	✓		✓			✓			✓
South Sudan	✓	✓	✓										✓
Sudan	✓	✓	✓										✓
Swaziland	✓	✓	✓							✓			✓
Tanzania	✓	✓	✓				✓	✓					✓
Togo	✓	✓	✓										✓
Tunisia	✓	✓	✓	✓			✓						✓
Uganda	✓	✓	✓										✓
Western Sahara	✓	✓	✓	✓		✓	✓						✓
Zambia	✓	✓	✓	✓									✓
Zimbabwe	✓	✓	✓										✓

City points are categorized by number of inhabitants.

DIGITAL MAP AVAILABILITY



ASIA	Admin. level 0	Admin. level 1	Admin. level 2	Admin. level 3	Admin. level 4	Admin. level 5	1-digit postcodes	2-digit postcodes	3-digit postcodes	4-digit postcodes	5-digit postcodes	6-digit postcodes	7-digit postcodes	City points
Afghanistan	✓	✓	✓				✓							✓
Armenia	✓	✓					✓							✓
Azerbaijan	✓	✓	✓				✓							✓
Bahrain	✓	✓	✓	✓			✓			✓				✓
Bangladesh	✓	✓	✓				✓							✓
Bhutan	✓	✓	✓				✓							✓
Brunei-Darussalam	✓	✓	✓				✓							✓
Cambodia	✓	✓	✓					✓						✓
China	✓	✓	✓	✓			✓	✓	✓			✓ ¹		✓
Georgia	✓	✓	✓				✓							✓
India	✓	✓	✓	✓						✓		✓		✓
Indonesia	✓	✓	✓				✓				✓			✓
Iran	✓	✓	✓				✓							✓
Iraq	✓	✓	✓				✓							✓
Israel	✓	✓	✓	✓			✓							✓
Japan	✓	✓	✓	✓			✓	✓					✓	✓
Jordan	✓	✓	✓				✓							✓
Kazakhstan	✓	✓	✓				✓			✓				✓
Korea North	✓	✓	✓											✓
Korea South	✓	✓	✓	✓			✓				✓			✓
Kuwait	✓	✓	✓				✓							✓
Kyrgyzstan	✓	✓	✓					✓	✓					✓
Laos	✓	✓	✓				✓							✓
Lebanon	✓	✓	✓				✓							✓
Malaysia	✓	✓	✓				✓				✓			✓
Maldives	✓	✓					✓							✓
Mongolia	✓	✓	✓				✓			✓				✓
Myanmar	✓	✓	✓	✓			✓							✓
Nepal	✓	✓	✓			✓		✓						✓
Oman	✓	✓	✓			✓								✓
Pacific Islands:														
▪ American Samoa	✓													
▪ Guam	✓													
▪ Northern Mariana Islands	✓													
▪ Solomon Islands	✓													
Pakistan	✓	✓	✓	✓			✓							✓
Palestina	✓	✓	✓				✓							✓
Papua New Guinea	✓	✓	✓				✓							✓
Philippines	✓	✓	✓	✓			✓			✓				✓
Qatar	✓	✓	✓											✓
Russian Federation	✓	✓	✓	✓	✓ ¹		✓					✓ ¹		✓
Saudi Arabia	✓	✓	✓			✓								✓
Singapore	✓	✓	✓	✓			✓							✓
Sri Lanka	✓	✓	✓				✓							✓
Syria	✓	✓	✓											✓
Taiwan	✓	✓	✓	✓		✓	✓	✓						✓
Tajikistan	✓	✓	✓					✓	✓					✓
Thailand	✓	✓	✓				✓				✓			✓
Timor-Leste	✓	✓	✓											✓
Turkmenistan	✓	✓	✓					✓	✓					✓
United Arab Emirates	✓	✓												✓
Uzbekistan	✓	✓	✓				✓			✓				✓
Vietnam	✓	✓	✓				✓			✓				✓
Yemen	✓	✓	✓											✓

City points are categorized by number of inhabitants.

¹⁾ Russia/China: city districts and 6-digit postcodes are only available for selected cities.

DIGITAL MAP AVAILABILITY



AMERICA

	Admin. level 0	Admin. level 1	Admin. level 2	Admin. level 3	Admin. level 4	Admin. level 5	1-digit postcodes	2-digit postcodes	3-digit postcodes	4-digit postcodes	5-digit postcodes	6-digit postcodes	City points
Argentina	✓	✓	✓				✓			✓			✓
Belize	✓	✓	✓										✓
Bermuda	✓	✓					✓		✓				✓
Bolivia	✓	✓	✓	✓									✓
Brazil	✓	✓	✓	✓	✓		✓			✓ ³			✓
Canada	✓	✓	✓	✓	✓			✓					✓
Caribbean Islands:													
▪ Anguilla	✓	✓								✓			✓
▪ Antigua and Barbuda	✓	✓											✓
▪ Aruba	✓	✓											✓
▪ Bahamas	✓	✓											✓
▪ Barbados	✓	✓											✓
▪ Bes	✓	✓											✓
▪ British Virgin Islands	✓	✓	✓						✓				✓
▪ Cayman Islands	✓	✓				✓							✓
▪ Cuba	✓	✓	✓					✓					✓
▪ Curacao	✓	✓							✓				✓
▪ Dominica	✓	✓											✓
▪ Dominican Republic	✓	✓	✓				✓						✓
▪ Grenada	✓	✓											✓
▪ Guadeloupe	✓	✓	✓	✓	✓	✓				✓			✓
▪ Haiti	✓	✓	✓	✓	✓		✓						✓
▪ Jamaica	✓	✓	✓			✓			✓				✓
▪ Martinique	✓	✓	✓	✓	✓	✓		✓		✓			✓
▪ Montserrat	✓	✓						✓					✓
▪ Puerto Rico	✓	✓	✓	✓				✓		✓			✓
▪ Saint Barthelemy	✓	✓								✓			✓
▪ Saint Kitts and Nevis	✓	✓											✓
▪ Saint Lucia	✓	✓								✓			✓
▪ Saint Martin	✓	✓								✓			✓
▪ Saint Vincent & Grenadines	✓	✓											✓
▪ Sint Maarten	✓	✓											✓
▪ Trinidad and Tobago	✓	✓											✓
▪ Turks and Caicos	✓	✓						✓					✓
▪ US Virgin Islands	✓	✓	✓							✓			✓
Chile	✓	✓	✓	✓		✓		✓					✓
Colombia	✓	✓	✓				✓				✓		✓
Costa Rica	✓	✓	✓	✓				✓		✓			✓
Ecuador	✓	✓	✓				✓		✓				✓
El Salvador	✓	✓	✓				✓						✓
Falkland Islands	✓	✓									✓ ¹		✓
French Guiana	✓	✓	✓	✓						✓			✓
Guatemala	✓	✓	✓				✓						✓
Guyana	✓	✓	✓										✓
Honduras	✓	✓	✓	✓			✓						✓
Mexico	✓	✓	✓				✓			✓ ³			✓
Nicaragua	✓	✓	✓				✓			✓ ⁴			✓
Panama	✓	✓	✓				✓						✓
Paraguay	✓	✓	✓				✓		✓ ²				✓
Peru	✓	✓	✓	✓			✓			✓			✓
South Georgia	✓	✓									✓ ¹		✓
Suriname	✓	✓	✓										✓
Uruguay	✓	✓	✓				✓			✓			✓
United States	✓	✓	✓	✓	✓		✓			✓			✓
Venezuela	✓	✓	✓				✓						✓

City points are categorized by number of inhabitants.

¹⁾ Falklands & South Georgia: 7-digit postcodes.

²⁾ Paraguay: Additional postal districts were introduced to the city Asunción.

³⁾ Brazil/Mexico: 5-digit postcodes are only available for selected cities.

⁴⁾ Nicaragua: The 3-digit postcode areas of Managua were integrated in the 5-digit postcode map, thus covering the complete country.

DIGITAL MAP AVAILABILITY



AUSTRALIA	Admin. level 0	Admin. level 1	Admin. level 2	Admin. level 3	Admin. level 4	Admin. level 5	Admin. level 6	1-digit postcodes	2-digit postcodes	3-digit postcodes	4-digit postcodes	5-digit postcodes	6-digit postcodes	City points
Australia ¹	✓	✓	✓	✓	✓	✓	✓	✓	✓	✓	✓			✓
New Zealand	✓	✓	✓	✓	✓			✓		✓				✓

City points are categorized by number of inhabitants.

¹⁾ New Zealand is included.

CONTINENT EDITIONS

Western Europe
Eastern Europe
Europe, complete
Europe 2-digit postcodes / NUTS edition
Africa
Asia
America
Australia, incl. New Zealand

The **Europe two-digit postcode / NUTS edition** contains the official European boundary data as well as cities and coverage of the 2-digit postcodes for all European countries. The territorial divisions contained in this edition allow you to carry out Europe-wide market and sales territory planning. Please note that Ireland does not have a postcode system.

WORLD EDITION

World Map Edition, complete
World Map Edition, admin 1

The **World Map Edition, admin 1** includes coverage of national boundaries as well as the first administrative level of all countries in addition to a layer featuring selected worldwide cities.

INDUSTRY-SPECIFIC EDITIONS

GERMANY

AVON
Grosso
IMS-Landscape (IQVIA Commercial)
RPI/ODV-Landscape (Insight Health)

telecommunications
press distribution area
pharmaceutical industry
Regional Pharma Information

CRESTA ZONES

CRESTA LowRes Zones 2013*
CRESTA HighRes Zones 2013 (inkl. LowRes)*
CRESTA Assignment Table
CRESTA GfK World, HighRes & LowRes Zones*

Catastrophe Risk Evaluation and Standardizing
Target Accumulations
*(incl. Assignment Table)

NOTE:

Upon request, the CRESTA high-resolution zones can be obtained for many individual countries. Access a list of available countries at www.gfk-geomarketing.com/cresta.

ORDER FORM



All GfK products can be ordered using this form.
Simply complete the form and then fax or e-mail it to us.

Order online at:
> www.gfk-webshop.de

Product name	Price	Quantity	Total price
<input type="text"/>	€	<input type="text"/>	€
<input type="text"/>	€	<input type="text"/>	€
<input type="text"/>	€	<input type="text"/>	€
<input type="text"/>	€	<input type="text"/>	€

For map orders, please specify the desired data format:

☐ ESRI ArcGIS (.shp) ☐ RegioGraph (.lay) ☐ MapInfo (.tab) ☐ Oracle ☐ GeoDatabase (.gdb)

☐ UPDATE SUBSCRIPTION

You are ordering RegioGraph, digital maps or GfK market data as a subscription. New versions of the ordered products will be automatically sent to you in the coming years without separate billing. This generally corresponds to an average of a maximum of one update per year. The discounted update price already applies to the first delivery. This is invoiced annually in advance and is based on the GfK GeoMarketing pricelist in force on the date of ordering. The subscription has a minimum duration of 36 months. The subscription will renew automatically for one additional year in each case unless cancelled no later than 3 months before the contract expires.

All prices are for single-user, in-house licenses. The general terms and conditions and licensing regulations of GfK GeoMarketing apply. These are detailed at www.gfk-geomarketing.com/licences. All prices exclude VAT and shipping. For delivery in Germany, VAT will be added. For delivery in the EU, please quote your VAT number.

PLEASE DELIVER TO:

Simply complete the form and send it to us:
F +49 7251 9295 290 | geomarketing@gfk.com

Company	Department
First name	Surname
Street	Postcode, City, Country
Phone	Fax
E-mail	VAT number
Date	Signature

Terms & conditions:

☐ UPS / Payment in advance ☐ UPS / Invoice
(large companies / institutions)

☐ Express delivery