

# Digital maps Singapore



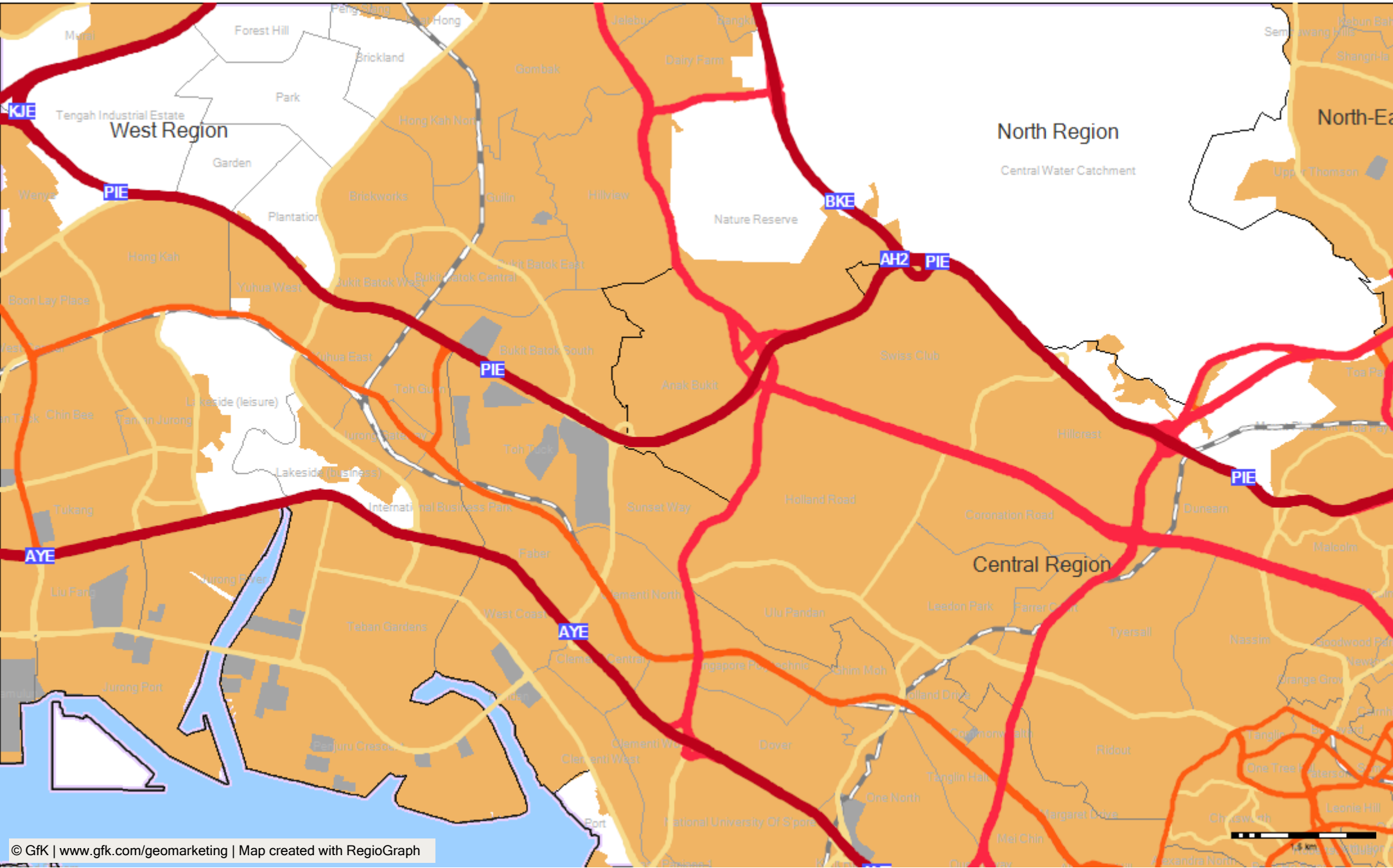
Growth  
from  
Knowledge

Geomarketing is the analysis and visualization of the place-based component of market and company data. Geomarketing is therefore the basis for making more informed business decisions.

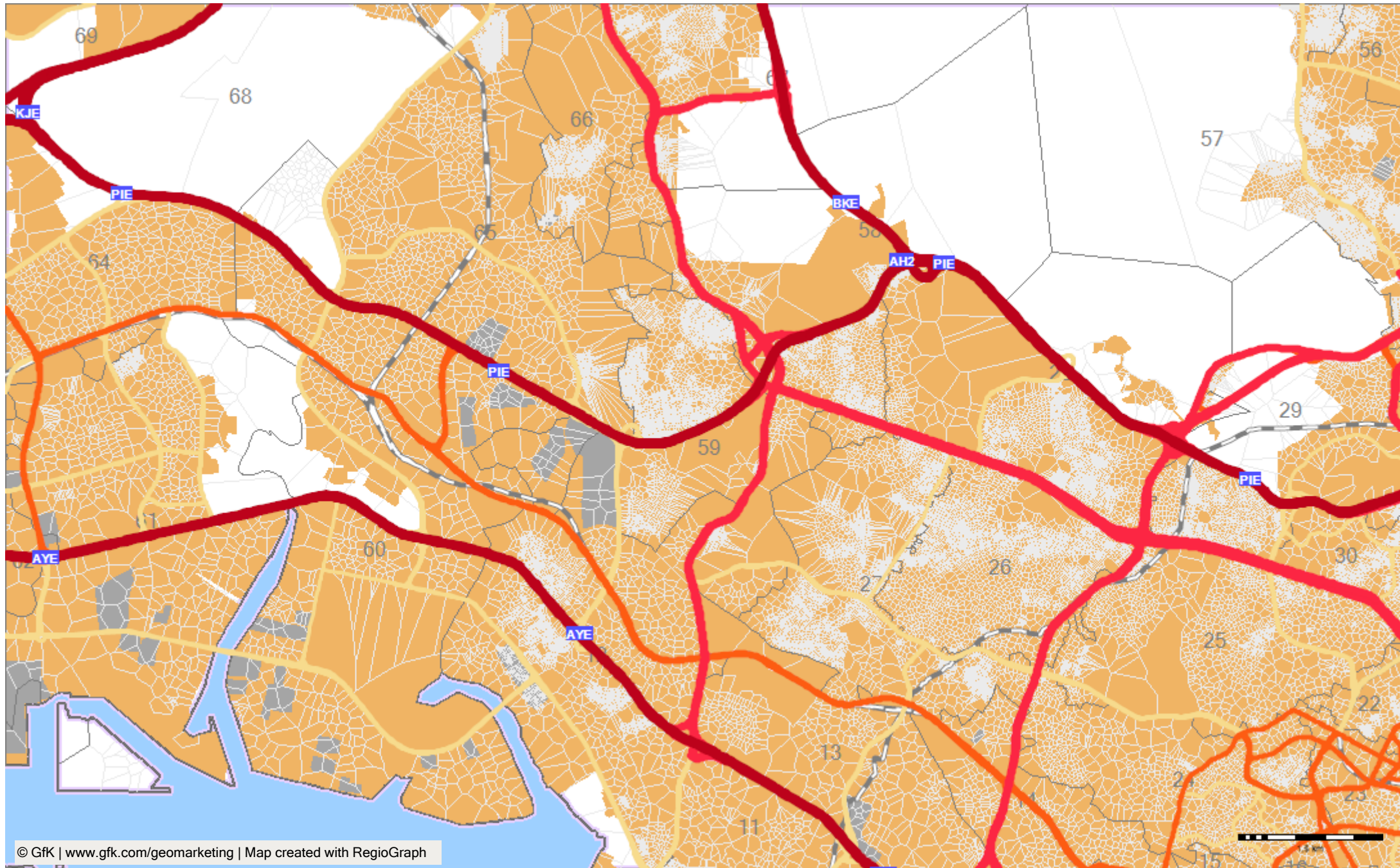
If you have any questions,  
please contact us at  
T +49 7251 9295 200  
[geomarketing@gfk.com](mailto:geomarketing@gfk.com)



# Postal units in Singapore



# Postal units in Singapore



## SINGAPORE

Layer-/Filename	Object type*	Type	No. of objects	Off. code**	Nat. lang.***
<b>Available for all formats (RegioGraph, ESRI/shape, MapInfo/tab): 6 layers</b>					
regions Singapore 2020	admin (level 1)	polygon	5	✓	
planning areas Singapore 2020	admin (level 2)	polygon	55	✓	
subzones Singapore 2020	admin (level 3)	polygon	332	✓	
2-digit postcode areas Singapore 2020	postal (2-digit)	polygon	83	✓	
6-digit postcode areas Singapore 2020	postal (6-digit)	polygon	121387	✓	
cities over 5,000,000 Singapore	topogr	point	1		
<b>Available for RegioGraph only: 9 layers</b>					
highways Singapore 2020	TT	line	498		
major roads Singapore 2020	TT	line	1753		
minor roads Singapore 2020	TT	line	1487		
local roads Singapore 2020	TT	line	3813		
railways Singapore 2020	TT	line	375		
airport ground Singapore	TT	polygon	2		
runway Singapore	TT	polygon	2		
urban areas Singapore	TT	polygon	71		
industrial areas Singapore	TT	polygon	149		

# Worldwide digital maps

You can use geomarketing software, GIS, BI and CRM systems to visualize and analyze your company data on digital maps. In just a few steps, you can extract insights from your data that would otherwise not be apparent. GfK GeoMarketing's worldwide map collection is the ideal foundation for carrying out these cartographic analyses. Select from among 240 country map editions to support your international planning. All maps are created by our own in-house team of cartographers and fit together seamlessly, without gaps or

## Highest quality standards

- Comprehensively researched
- Regularly updated
- High-resolution, gapless vector maps
- Available in all standard data formats, including ESRI ArcGIS (\*.shp), RegioGraph (\*.lay), MapInfo (\*.tab), Oracle, GeoDatabase (\*.gdb).

### Update price

If your map edition is not older than the most recent two releases, you can update to the current version for 30% off the full price.

### Ongoing savings of 50%!

Subscribe and save 50%, which already applies to your first order. We'll then automatically send you new map versions upon their release to ensure that you are always working with the latest products.

Below you'll find a summary of GfK GeoMarketing's complete map offering. We offer the world's largest collection of vector maps of postal and administrative boundaries. The map layers included in each country edition can be found in the corresponding tabular overview.

## Select your edition

### ▪ Country editions

Looking for a map of a specific country? You can individually order country-specific map editions. These editions are priced in three categories, beginning at €500.

### ▪ Continent editions

The continent edition contains all maps of the countries located in the corresponding continent and is available for an attractive bundled rate. For each country, you'll receive all available postcode and administrative maps as well as individual map layers. All layers include complete German, international and local place-name attributions.

### ▪ World Map Edition

The World Map Edition is a combination of the individual continent editions and as such is one of the largest collections of vector-based administrative and postcode maps available on the market. The World Map Edition offers global coverage. Individual countries are saved in separate files. All map layers fit together seamlessly with those of neighboring countries, without gaps or overlaps.

# DIGITAL MAP AVAILABILITY



Europe	Administrative level							Postcode level							City points	Price in Euro
	0	1	2	3	4	5	6	1	2	3	4	5	6	7		
Albania	✓	✓	✓						✓		✓				✓	500
Austria	✓	✓	✓	✓	✓				✓		✓				✓	1000
Belarus	✓	✓	✓						✓				✓		✓	2000
Belgium	✓	✓	✓	✓	✓	✓			✓		✓				✓	1000
Bosnia-Herzegovina	✓	✓	✓	✓					✓			✓			✓	1000
Bulgaria	✓	✓	✓	✓					✓		✓				✓	1000
Croatia	✓	✓	✓						✓			✓			✓	1000
Cyprus	✓	✓	✓						✓		✓				✓	500
Czech Republic	✓	✓	✓	✓	✓				✓			✓			✓	1000
Denmark <sup>1</sup>	✓	✓	✓	✓					✓		✓				✓	1000
Estonia	✓	✓	✓	✓					✓			✓			✓	1000
Finland	✓	✓	✓	✓	✓				✓			✓			✓	2000
France <sup>2</sup>	✓	✓	✓	✓	✓	✓	✓		✓			✓			✓	2000
Germany	✓	✓	✓	✓	✓			✓	✓			✓			✓	1000
Greece	✓	✓	✓	✓	✓	✓			✓			✓			✓	1000
Hungary	✓	✓	✓	✓	✓				✓		✓				✓	1000
Iceland	✓	✓	✓	✓					✓	✓					✓	500
Ireland	✓	✓	✓	✓	✓				✓	✓					✓	500
Italy <sup>3</sup>	✓	✓	✓	✓	✓				✓			✓			✓	2000
Kosovo	✓	✓	✓						✓						✓	500
Latvia	✓	✓	✓	✓					✓		✓				✓	1000
Lithuania	✓	✓	✓	✓					✓			✓			✓	2000
Luxembourg	✓	✓	✓	✓					✓		✓				✓	500
Malta	✓	✓	✓	✓						✓					✓	500
Moldova	✓	✓	✓						✓		✓				✓	1000
Montenegro	✓	✓							✓			✓			✓	500
Netherlands	✓	✓	✓	✓	✓				✓		✓		✓		✓	2000
North Macedonia	✓	✓	✓						✓		✓				✓	500
Norway <sup>4</sup>	✓	✓	✓	✓	✓	✓			✓		✓				✓	2000
Poland	✓	✓	✓	✓	✓				✓			✓			✓	2000
Portugal	✓	✓	✓	✓	✓	✓			✓		✓			✓	✓	1000
Romania <sup>5</sup>	✓	✓	✓						✓				✓ <sup>5</sup>		✓	2000
Serbia	✓	✓	✓	✓					✓			✓			✓	1000
Slovakia	✓	✓	✓	✓					✓			✓			✓	1000
Slovenia	✓	✓	✓	✓	✓				✓		✓				✓	1000
Spain <sup>7</sup>	✓	✓	✓	✓	✓				✓			✓			✓	2000
Sweden	✓	✓	✓	✓					✓			✓			✓	2000
Switzerland <sup>8</sup>	✓	✓	✓	✓					✓		✓		✓		✓	1000
Turkey <sup>9</sup>	✓	✓	✓	✓ <sup>9</sup>					✓			✓			✓	2000
Ukraine	✓	✓	✓						✓	✓		✓ <sup>11</sup>			✓	1000
United Kingdom <sup>6</sup>	✓	✓	✓	✓					✓	✓		✓ <sup>6</sup>			✓	1000
United Kingdom <sup>10</sup>	✓	✓	✓	✓					✓	✓		✓ <sup>6</sup>	✓ <sup>10</sup>		✓	2000

City points are categorized by number of inhabitants.

- 1) Denmark includes Faroe Islands and Greenland
- 2) France includes Monaco
- 3) Italy includes Vatican City State and San Marino
- 4) Norway includes Svalbard and Jan Mayen
- 5) Romania: coverage of 4-digit postcode areas included for larger cities
- 6) United Kingdom: postcode sectors
- 7) Spain includes Andorra and Gibraltar
- 8) Switzerland includes Liechtenstein
- 9) Turkey: The districts and districts and neighborhoods
- 10) United Kingdom: Postcode unit points are not available for RegioGraph
- 11) Ukraine: 5-digit postcodes are only available for selected cities

**Get a bonus when you order maps in the RegioGraph format!**

Maps ordered in the \*.lay format (RegioGraph) include purchasing power data for no additional charge!



# DIGITAL MAP AVAILABILITY



## Africa

Africa	Administrative level										Postcode level						City	Price
	0	1	2	3	4	5	6	7	8	1	2	3	4	5	6	points	in Euro	
Algeria	✓	✓									✓					✓	500	
Angola	✓	✓	✓													✓	500	
Benin	✓	✓	✓													✓	500	
Botswana	✓	✓	✓													✓	500	
Burkina Faso	✓	✓	✓													✓	500	
Burundi	✓	✓	✓													✓	500	
Cameroon	✓	✓	✓													✓	500	
Cape Verde	✓	✓	✓	✓							✓					✓	500	
Central African Rep.	✓	✓	✓													✓	500	
Chad	✓	✓	✓													✓	500	
Comoros	✓	✓														✓	500	
Congo	✓	✓														✓	500	
Democratic Rep. of Congo	✓	✓	✓	✓												✓	500	
Djibouti	✓	✓	✓													✓	500	
Egypt	✓	✓	✓								✓					✓	1000	
Equatorial-Guinea	✓	✓	✓													✓	500	
Eritrea	✓	✓	✓													✓	500	
Ethiopia	✓	✓	✓	✓												✓	500	
Gabon	✓	✓	✓													✓	500	
Gambia	✓	✓	✓													✓	500	
Ghana	✓	✓	✓								✓					✓	500	
Guinea	✓	✓	✓	✓												✓	500	
Guinea-Bissau	✓	✓	✓													✓	500	
Ivory Coast	✓	✓	✓	✓												✓	500	
Kenya	✓	✓								✓		✓				✓	500	
Lesotho	✓	✓								✓						✓	500	
Liberia	✓	✓	✓								✓					✓	500	
Libya	✓	✓														✓	500	
Madagascar	✓	✓	✓							✓						✓	500	
Malawi	✓	✓	✓													✓	500	
Mali	✓	✓	✓													✓	500	
Mauritania	✓	✓	✓													✓	500	
Mauritius	✓	✓								✓						✓	500	
Mayotte	✓	✓												✓		✓	500	
Morocco	✓	✓	✓	✓						✓	✓					✓	1000	
Mozambique	✓	✓	✓								✓					✓	500	
Namibia	✓	✓	✓									✓				✓	500	
Niger	✓	✓	✓													✓	500	
Nigeria	✓	✓	✓								✓					✓	500	
Reunion	✓	✓	✓	✓	✓	✓								✓		✓	500	
Rwanda	✓	✓	✓	✓												✓	500	
Sao Tome and Principe	✓	✓	✓													✓	500	
Senegal	✓	✓	✓								✓					✓	500	
Seychelles	✓	✓														✓	500	
Sierra Leone	✓	✓	✓													✓	500	
Somalia	✓	✓	✓													✓	500	
South Africa	✓	✓	✓	✓	✓	✓	✓	✓			✓		✓			✓	1000	
South Sudan	✓	✓	✓													✓	500	
Sudan	✓	✓	✓													✓	500	
Swaziland	✓	✓	✓										✓			✓	500	
Tanzania	✓	✓	✓	✓							✓	✓				✓	500	
Togo	✓	✓	✓													✓	500	
Tunisia	✓	✓	✓	✓							✓					✓	500	
Uganda	✓	✓	✓	✓	✓											✓	500	
Western Sahara	✓	✓	✓	✓						✓	✓					✓	500	
Zambia	✓	✓	✓	✓												✓	500	
Zimbabwe	✓	✓	✓													✓	500	

City points are categorized by number of inhabitants.

# DIGITAL MAP AVAILABILITY



Asia	Administrative level						Postcode level							City points	Price in Euro
	0	1	2	3	4	5	1	2	3	4	5	6	7		
Afghanistan	✓	✓	✓					✓						✓	1000
Armenia	✓	✓						✓						✓	500
Azerbaijan	✓	✓	✓					✓						✓	500
Bahrain	✓	✓	✓	✓				✓		✓				✓	500
Bangladesh	✓	✓	✓					✓						✓	500
Bhutan	✓	✓	✓					✓						✓	500
Brunei-Darussalam	✓	✓	✓					✓						✓	500
Cambodia	✓	✓	✓	✓				✓		✓		✓		✓	1000
China	✓	✓	✓	✓	✓ <sup>2</sup>	✓ <sup>2</sup>		✓	✓	✓		✓ <sup>1</sup>		✓	2000
Georgia	✓	✓	✓					✓						✓	500
India	✓	✓	✓	✓						✓		✓		✓	2000
Indonesia	✓	✓	✓	✓	✓			✓			✓			✓	2000
Iran	✓	✓	✓					✓						✓	1000
Iraq	✓	✓	✓					✓						✓	1000
Israel	✓	✓	✓	✓				✓						✓	1000
Japan	✓	✓	✓	✓				✓	✓				✓	✓	2000
Jordan	✓	✓	✓					✓						✓	500
Kazakhstan	✓	✓	✓					✓		✓				✓	1000
Korea North	✓	✓	✓											✓	1000
Korea South	✓	✓	✓	✓				✓			✓			✓	1000
Kuwait	✓	✓	✓					✓						✓	1000
Kyrgyzstan	✓	✓	✓						✓	✓				✓	500
Laos	✓	✓	✓					✓						✓	1000
Lebanon	✓	✓	✓					✓						✓	500
Malaysia	✓	✓	✓					✓			✓			✓	1000
Maldives	✓	✓						✓						✓	500
Mongolia	✓	✓	✓					✓		✓				✓	1000
Myanmar	✓	✓	✓	✓				✓						✓	500
Nepal	✓	✓	✓				✓		✓					✓	1000
Oman	✓	✓	✓				✓							✓	500
Pakistan	✓	✓	✓	✓	✓			✓						✓	1000
Palestina	✓	✓	✓					✓						✓	500
Papua New Guinea	✓	✓	✓					✓						✓	500
Philippines	✓	✓	✓	✓				✓		✓				✓	1000
Qatar	✓	✓	✓											✓	500
Russian Federation	✓	✓	✓	✓	✓ <sup>1</sup>			✓				✓ <sup>1</sup>		✓	2000
Saudi Arabia	✓	✓	✓				✓	✓						✓	1000
Singapore	✓	✓	✓	✓				✓				✓		✓	500
Sri Lanka	✓	✓	✓					✓						✓	500
Syria	✓	✓	✓											✓	500
Taiwan	✓	✓	✓	✓			✓	✓	✓					✓	1000
Tajikistan	✓	✓	✓						✓	✓				✓	500
Thailand	✓	✓	✓					✓			✓			✓	1000
Timor-Leste	✓	✓	✓											✓	500
Turkmenistan	✓	✓	✓						✓	✓				✓	500
United Arab Emirates	✓	✓												✓	500
Uzbekistan	✓	✓	✓					✓		✓				✓	1000
Vietnam	✓	✓	✓						✓					✓	1000
Yemen	✓	✓	✓											✓	1000

City points are categorized by number of inhabitants.

1) Russia/China: city districts and 6-digit postcodes are only available for selected cities.

1) China: Macao parishes and Macao statistical districts.



# DIGITAL MAP AVAILABILITY



America	Administrative level						Postcode level						City points	Price in Euro
	0	1	2	3	4	5	1	2	3	4	5	6		
Argentina	✓	✓	✓					✓			✓		✓	2000
Belize	✓	✓	✓										✓	500
Bermuda	✓	✓						✓		✓			✓	500
Bolivia	✓	✓	✓	✓									✓	1000
Brazil	✓	✓	✓	✓	✓			✓			✓ <sup>3</sup>		✓	2000
Canada	✓	✓	✓	✓	✓				✓				✓	1000
Caribbean Islands:														2000
Anguilla	✓	✓								✓			✓	500
Antigua and Barbuda	✓	✓											✓	500
Aruba	✓	✓											✓	500
Bahamas	✓	✓											✓	500
Barbados	✓	✓											✓	500
Bes	✓	✓											✓	500
British Virgin Islands	✓	✓	✓							✓			✓	500
Cayman Islands	✓	✓					✓						✓	500
Cuba	✓	✓	✓						✓				✓	500
Curacao	✓	✓											✓	500
Dominica	✓	✓											✓	500
Dominican Republic	✓	✓	✓					✓					✓	500
Grenada	✓	✓											✓	500
Guadeloupe	✓	✓	✓	✓	✓	✓					✓		✓	500
Haiti	✓	✓	✓	✓	✓			✓					✓	500
Jamaica	✓	✓	✓				✓		✓				✓	500
Martinique	✓	✓	✓	✓	✓	✓			✓		✓		✓	500
Montserrat	✓	✓							✓				✓	500
Puerto Rico	✓	✓	✓	✓					✓		✓		✓	500
Saint Barthelemy	✓	✓									✓		✓	500
Saint Kitts and Nevis	✓	✓											✓	500
Saint Lucia	✓	✓											✓	500
Saint Martin	✓	✓									✓		✓	500
Saint Vincent & Grenadines	✓	✓											✓	500
Sint Maarten	✓	✓											✓	500
Trinidad and Tobago	✓	✓											✓	500
Turks and Caicos	✓	✓							✓				✓	500
US Virgin Islands	✓	✓	✓								✓		✓	500
Chile	✓	✓	✓	✓			✓		✓				✓	1000
Colombia	✓	✓	✓					✓				✓	✓	1000
Costa Rica	✓	✓	✓	✓					✓		✓		✓	1000
Ecuador	✓	✓	✓					✓		✓			✓	1000
El Salvador	✓	✓	✓					✓					✓	500
Falkland Islands	✓	✓										✓ <sup>1</sup>	✓	500
French Guiana	✓	✓	✓	✓							✓		✓	500
Guatemala	✓	✓	✓					✓					✓	500
Guyana	✓	✓	✓										✓	500
Honduras	✓	✓	✓	✓				✓					✓	500
Mexico	✓	✓	✓					✓			✓ <sup>3</sup>		✓	2000
Nicaragua	✓	✓	✓					✓			✓ <sup>4</sup>		✓	500
Panama	✓	✓	✓					✓					✓	500
Paraguay	✓	✓	✓					✓		✓ <sup>2</sup>			✓	500
Peru	✓	✓	✓	✓				✓			✓		✓	1000
South Georgia	✓	✓										✓ <sup>1</sup>	✓	500
Suriname	✓	✓	✓										✓	500
Uruguay	✓	✓	✓					✓			✓		✓	500
United States	✓	✓	✓	✓	✓			✓			✓		✓	1000
Venezuela	✓	✓	✓					✓					✓	1000

City points are categorized by number of inhabitants.

1) Falklands & South Georgia: 7-digit postcodes.

2) Paraguay: Additional postal districts were introduced to the city Asunción.

3) Brazil/Mexico: 5-digit postcodes are only available for selected cities.

4) Nicaragua: The 3-digit postcode areas of Managua were integrated in the 5-digit postcode map, thus covering the complete country.

# DIGITAL MAP AVAILABILITY



## Australia

	Administrative level							Postcode level						City points	Price in Euro
	0	1	2	3	4	5	6	1	2	3	4	5	6		
Australia	✓	✓	✓	✓	✓	✓	✓	✓	✓	✓	✓			✓	2000
New Zealand	✓	✓	✓	✓	✓				✓		✓			✓	1000

City points are categorized by number of inhabitants.

## Rest of World

	Administrative level							Postcode level						City points	Price in Euro
	0	1	2	3	4	5	6	1	2	3	4	5	6		
Rest of World:															1000
American Samoa	✓														
Antarctica	✓														
Bouvet Island	✓														
British Indian Ocean Territory	✓														
Cook Islands	✓														
Fiji	✓	✓	✓	✓	✓	✓								✓	
French Polynesia	✓														
French Southern Territories	✓														
Guam	✓														
Heard and McDonald Islands	✓														
Kiribati	✓														
Marshall Islands	✓	✓	✓												
Micronesia	✓														
Nauru	✓	✓	✓												
New Caledonia	✓														
Niue	✓														
Northern Mariana Islands	✓														
Palau	✓	✓	✓	✓											
Pitcairn	✓														
Saint Pierre and Miquelon	✓														
Samoa	✓	✓	✓	✓											
Solomon Islands	✓	✓	✓	✓											
St Helena Ascension Tristan de Cunha	✓	✓	✓												
Tokelau	✓														
Tonga	✓	✓	✓	✓											
Tuvalu	✓	✓	✓	✓											
US Minor Outlying Islands	✓														
Vanuatu	✓														
Wallis and Futuna	✓														

City points are categorized by number of inhabitants.

<b>Continent editions</b>	<b>Price in Euro</b>
Western Europe	9000
Eastern Europe	9000
Europe, complete	16000
Europe 2-digit postcodes / NUTS edition	1000
Africa	4000
Asia	16000
America	10000
Australia, incl. New Zealand	2000
Rest of World	1000

The Europe two-digit postcode / NUTS edition contains the official European boundary data as well as cities and coverage of the 2-digit postcodes for all European countries. The territorial divisions contained in this edition allow you to carry out Europe-wide market and sales territory planning. Please note that Ireland does not have a postcode system.

<b>World edition</b>	<b>Price in Euro</b>
World Map Edition, complete	34000
World Map Edition, admin 1	1000

The World Map Edition, admin 1 includes coverage of national boundaries as well as the first administrative level of all countries in addition to a layer featuring selected worldwide cities.

## Industry-specific editions

### Germany

AVON
Grosso
IMS-Landscape (IQVIA Commercial)
GfK Localities PLUS
RPI/ODV-Landscape (Insight Health)

telecommunications  
press distribution area  
pharmaceutical industry

Regional Pharma Information

### CRESTA Zones

CRESTA LowRes Zones 2019
CRESTA HighRes Zones 2019
CRESTA Assignment Table
CRESTA GfK World, HighRes & LowRes Zones*

Catastrophe Risk Evaluation and Standardizing  
Target Accumulations  
\*(incl. Assignment Table)  
\*\*(incl. Assignment Table, LowRes Zones)

**Note:** Upon request, the CRESTA high-resolution zones can be obtained for many individual countries. Access a list of available countries at [www.gfk-geomarketing.com/cresta](http://www.gfk-geomarketing.com/cresta).