



Growth
from
Knowledge

Share results
online for faster
decision-making

Add-on RegioGraph TeamConnect



Use Case: Sales Manager



“

*I already plan and optimize my sales territories with RegioGraph and would like **to communicate my results even more quickly** and use them as the basis for my weekly meeting.*

*To manage success, it's important for me to share the very **latest figures and analyses**. I therefore need a communication tool with which I can reach my team everywhere and inform them about updates and upcoming plannings.*

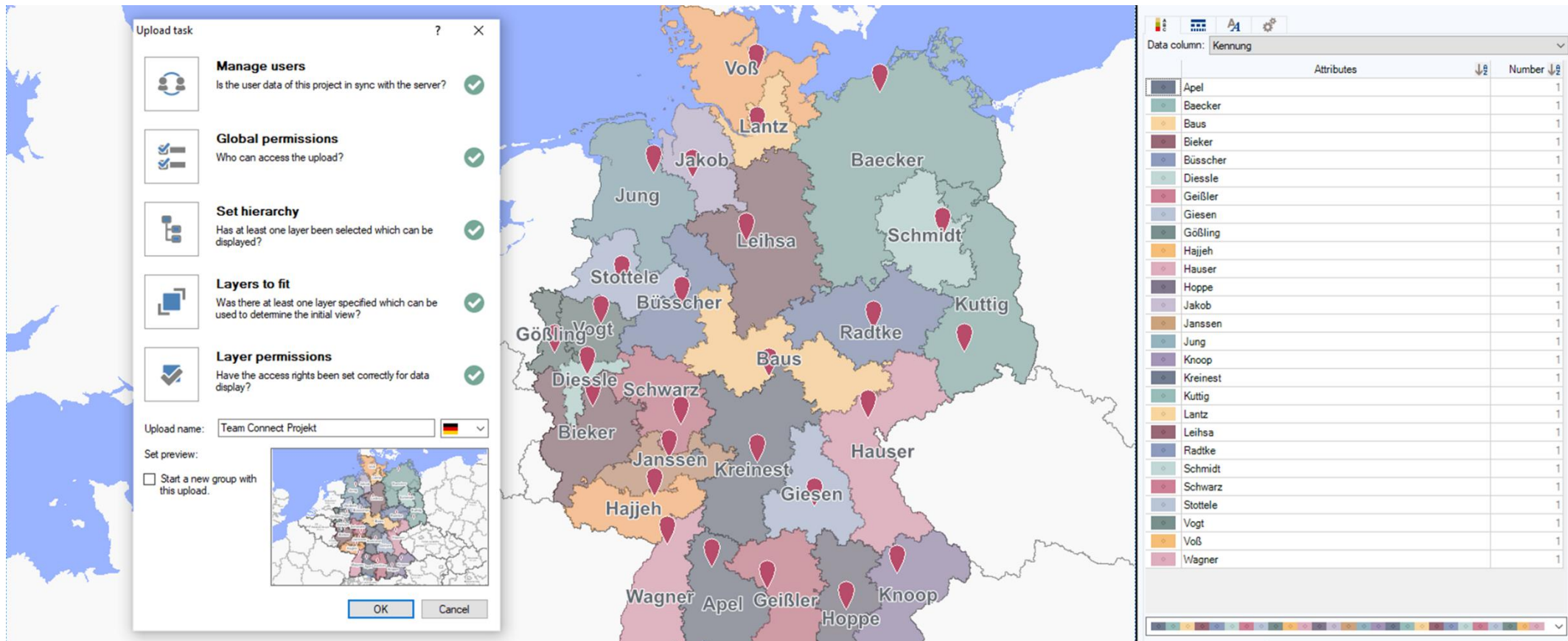


The solution:

RegioGraph for project planning and the
add-on RegioGraph TeamConnect for communication

Upload results as team insight

Want to share current figures and plannings from RegioGraph?
With your saved settings, you can communicate updates with a click.



The screenshot displays the 'Upload task' dialog box in the RegioGraph TeamConnect application. The dialog box contains several sections with status indicators (green checkmarks) indicating successful completion:


- Manage users:** Is the user data of this project in sync with the server? ✓
- Global permissions:** Who can access the upload? ✓
- Set hierarchy:** Has at least one layer been selected which can be displayed? ✓
- Layers to fit:** Was there at least one layer specified which can be used to determine the initial view? ✓
- Layer permissions:** Have the access rights been set correctly for data display? ✓

The 'Upload name' field is set to 'Team Connect Projekt' with a German flag icon. Below this, there is a 'Set preview' section with a checkbox 'Start a new group with this upload.' and a small map preview showing the selected regions.

The background shows a map of Germany with various regions labeled, including Voß, Lantz, Jakob, Baecker, Jung, Leihsa, Schmidt, Stottele, Büsscher, Radtke, Görling, Vogt, Baus, Kuttig, Diessle, Schwarz, Hauser, Bieker, Janssen, Kreinest, Giesen, Hajjeh, Hoppe, Wagner, Apel, Geißler, and Knoop.

On the right side, a table titled 'Data column: Kennung' displays a list of regions and their corresponding 'Number' values. The table has two columns: 'Attributes' and 'Number'.

Attributes	Number
Apel	1
Baecker	1
Baus	1
Bieker	1
Büsscher	1
Diessle	1
Geißler	1
Giesen	1
Gößling	1
Hajjeh	1
Hauser	1
Hoppe	1
Jakob	1
Janssen	1
Jung	1
Knoop	1
Kreinest	1
Kuttig	1
Lantz	1
Leihsa	1
Radtke	1
Schmidt	1
Schwarz	1
Stottele	1
Vogt	1
Voß	1
Wagner	1



As the login is browser-based,
you can reach your team
everywhere simultaneously
– via various end devices.
Each team member sees only
what is relevant for them.

Use Case: Sales force



“

*Whether I'm on the go, in home office or in the office – I always want to be **up to date**. I want to be able to find all my information in one place and not wasting time with outdated emails and attachments.*

*An **interactive map** would be ideal to access all customer data and locations in my area.*

*If there are **updates** that affect me, I would like to be notified and be able to comment on it.*



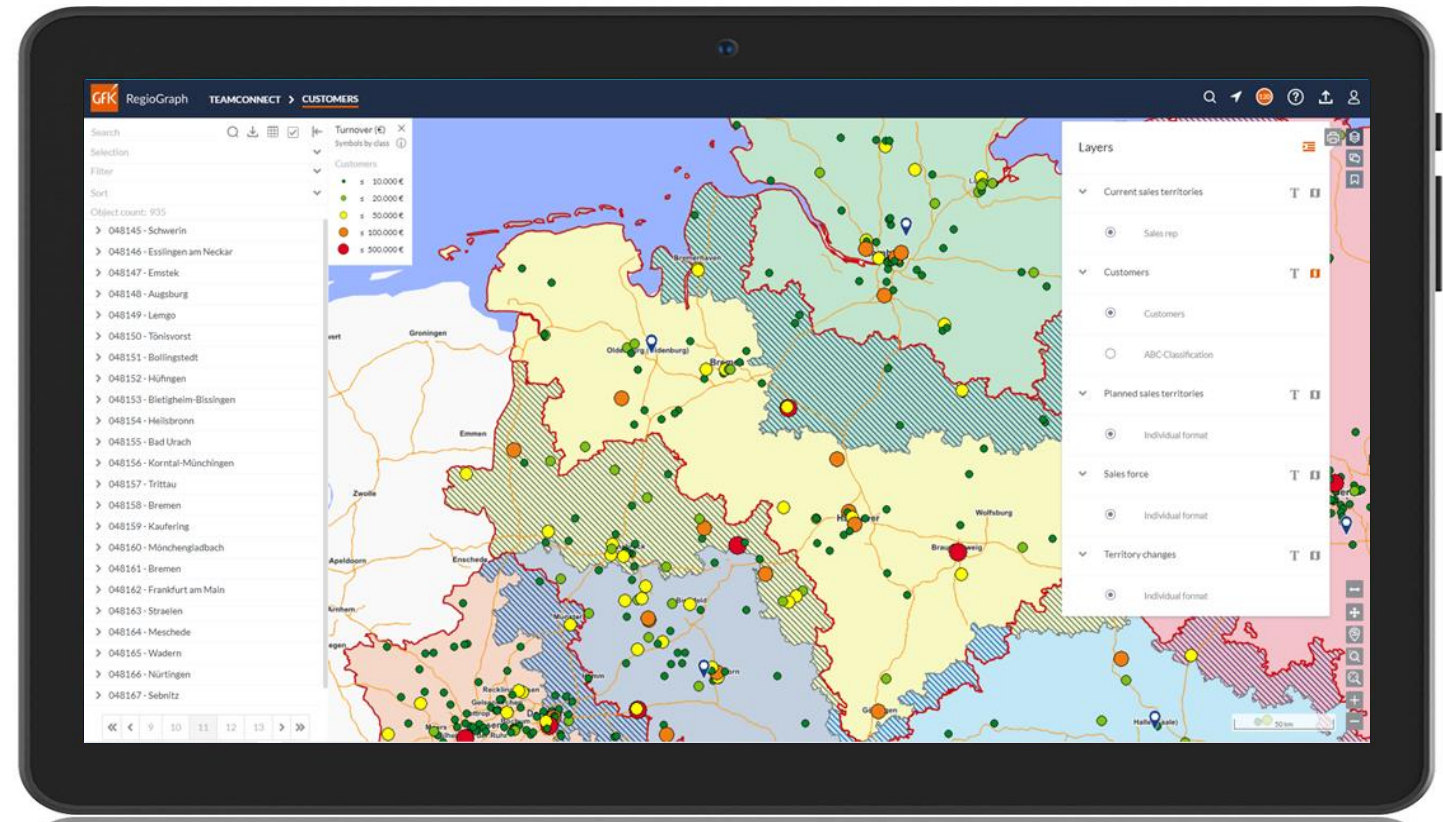
The solution:

Access to shared maps as
RegioGraph TeamConnect viewer

Perfect map design



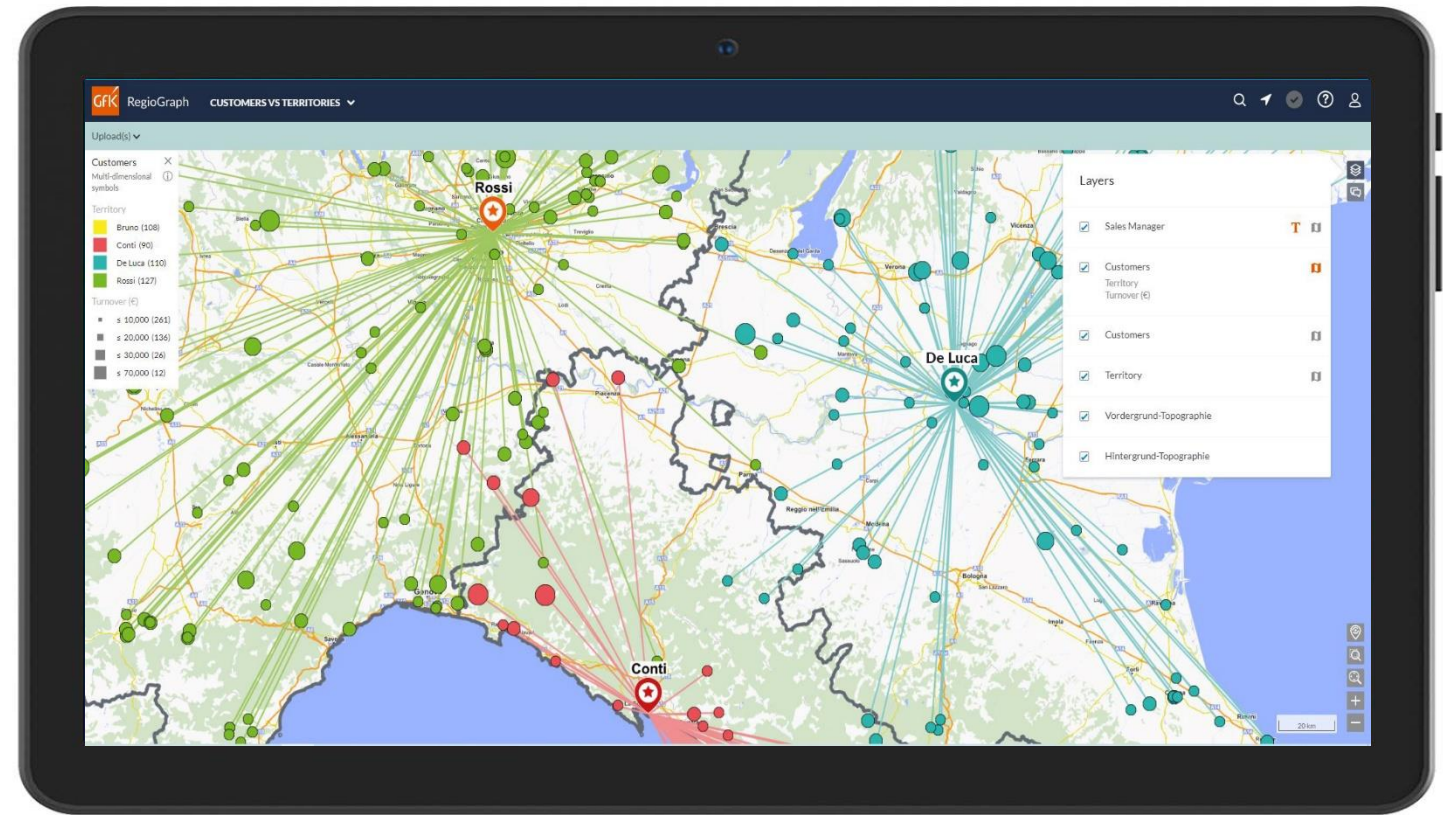
- Get up-to-date data analyses from RegioGraph online as an interactive map. This provides you with details at every zoom level.
- Showing/hiding layers makes it easier to analyze your data.
- For example, display topography and roads for orientation only as long as you need them.



Data visualization



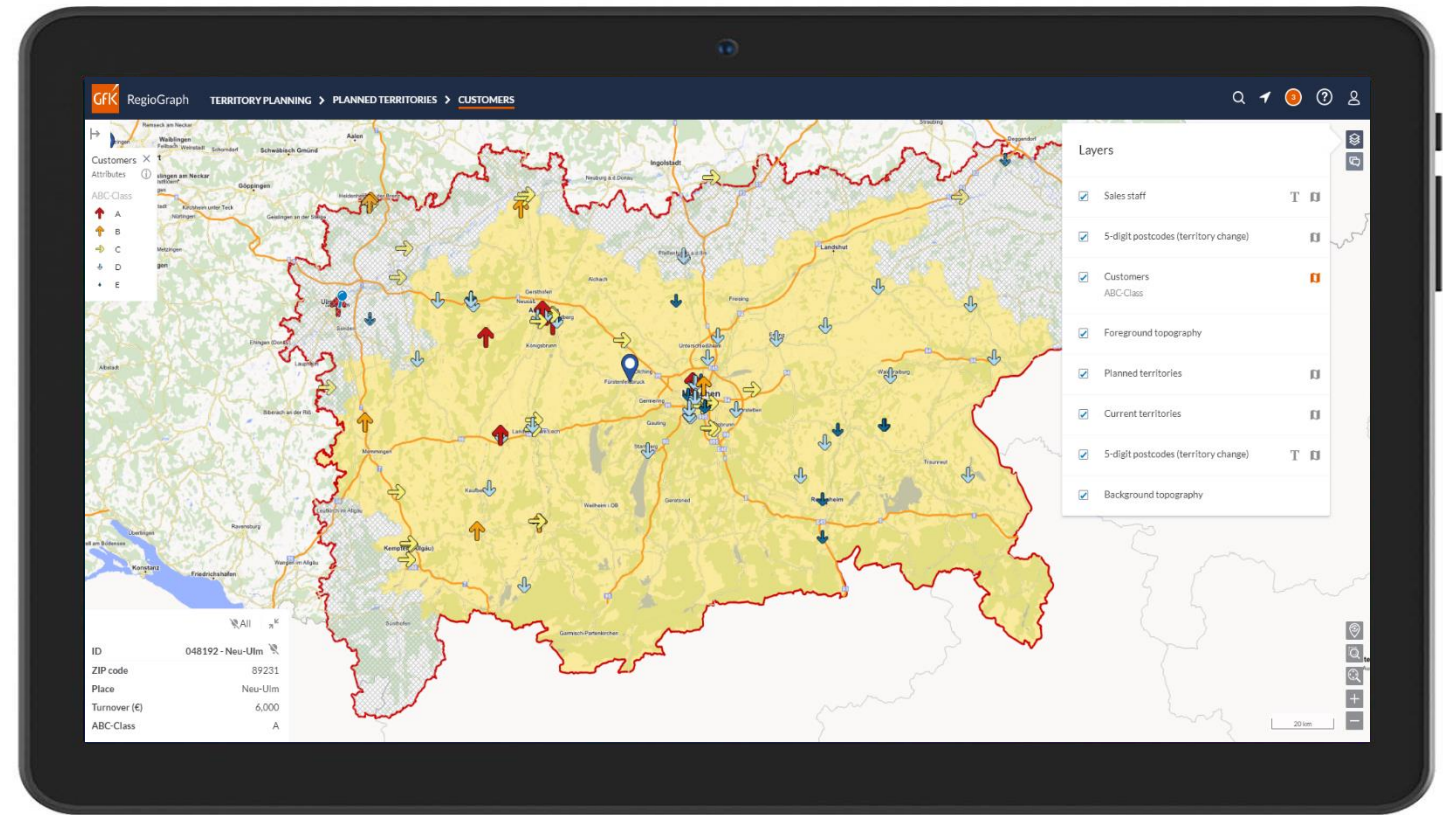
- The wide range of display options from RegioGraph increases the informative value of the split analyses:
 - Customer points can be mapped according to sales volume.
 - The star display and coloring show which customers are assigned to which sales representative.
 - You can identify whether a customer is located outside the territory.



Sales territory changes



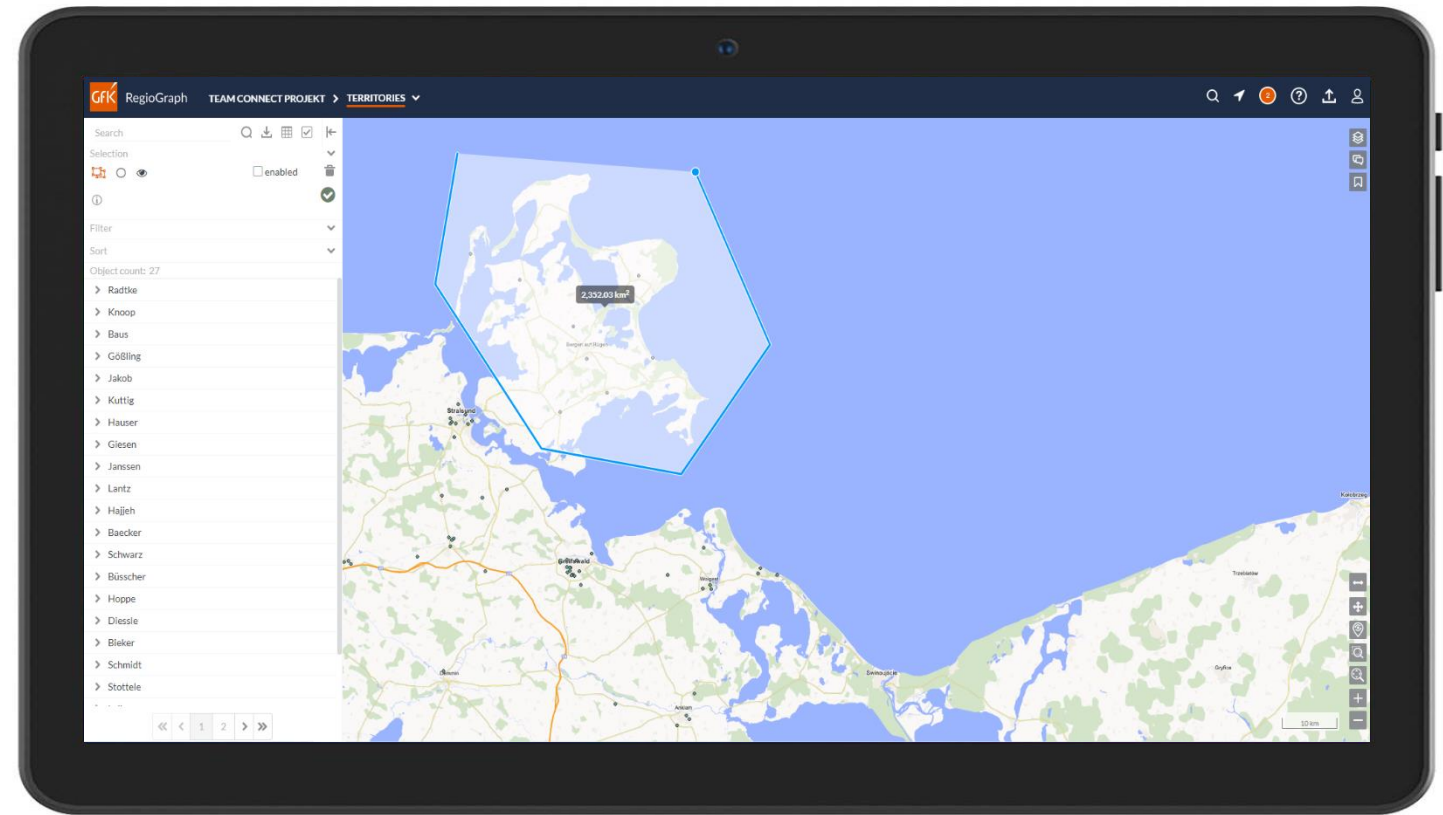
- View individual sales territories and look at customer distribution and ABC classification.
- The map display allows you to see at a glance which customers are affected by the sales territory change.
- For a closer look at the key figures of a new customer, you can "pin" it at the bottom.



Data analysis I



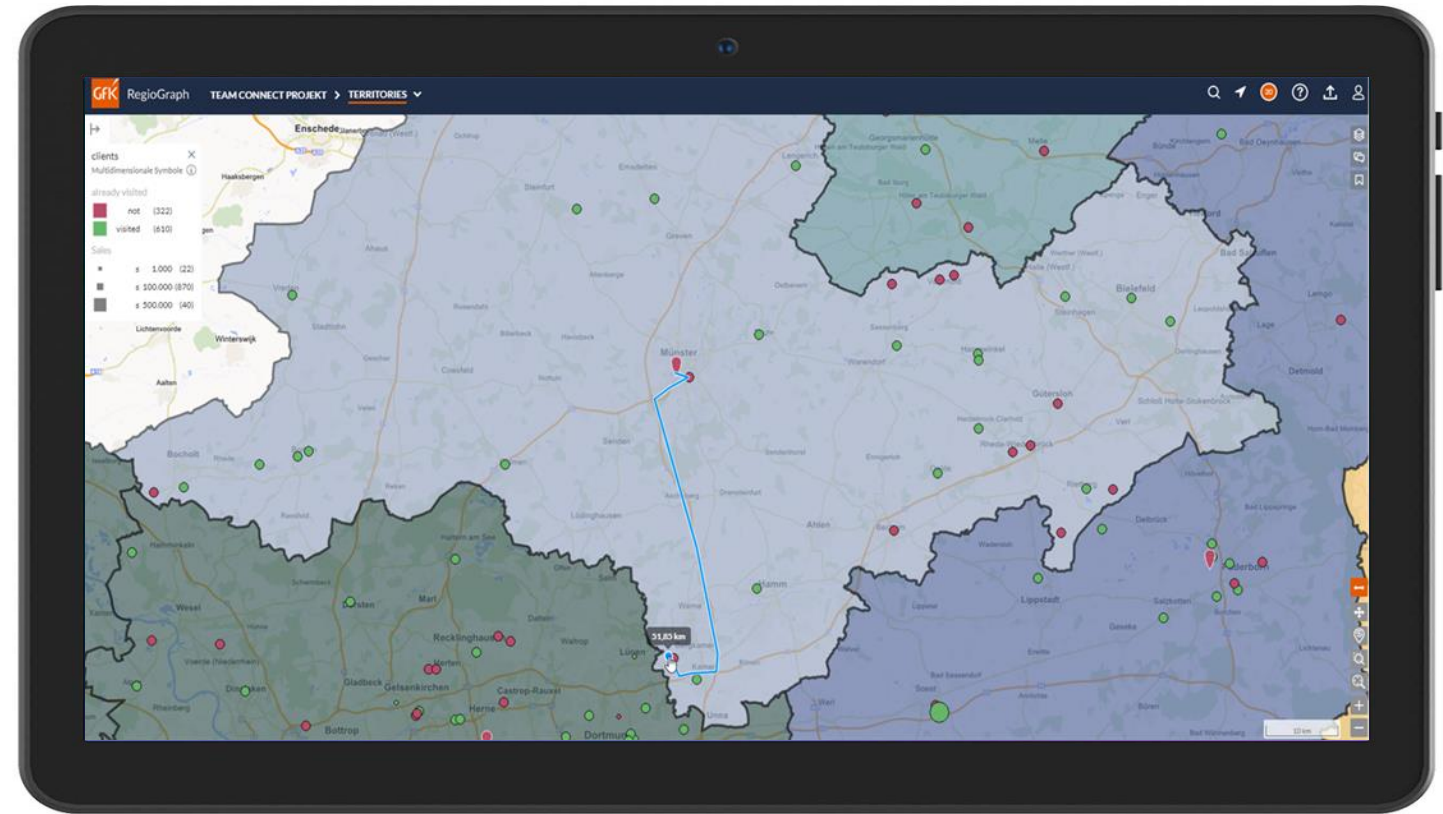
- All stored data can be found in the overall table.
- Use circle, rectangle or polygon to select only certain customers on the map.
- By searching, filtering and sorting you can easily evaluate your data.
- Your results can be downloaded as Excel or CSV.



Data analysis II



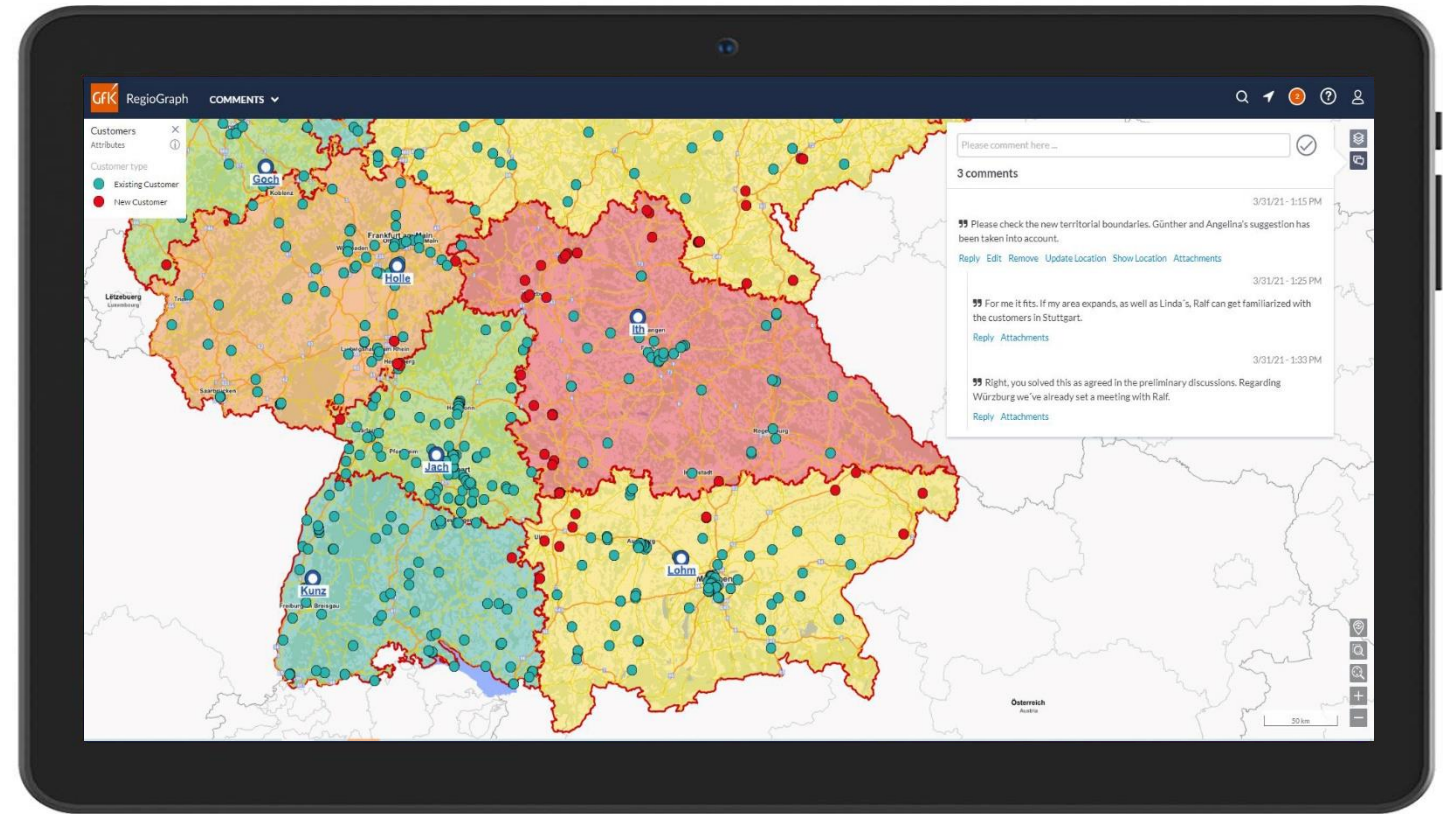
- Measure distances between customer points or locations.
- This allows you to estimate your next route for customer visits.



Communication



- Updates and changes are displayed as notifications.
- If you want to exchange information with your colleagues, you can use comments.
- Refer to a map section to clarify your comment.



For which RegioGraph versions
is the add-on available?

The add-on for your RegioGraph version

Available for all RegioGraph versions



RegioGraph Analysis	RegioGraph Planning	RegioGraph Strategy	Add-on RegioGraph TeamConnect
offers the fundamental tools necessary for analyzing your customers, turnover and potential.	includes intelligent tools for sales territory planning and optimization as well as street-level customer analyses.	provides powerful tools for detailed location evaluations based on potential and competitor influences.	allows you to share results online with your team for current insights into your planning.
Basic version	In addition to all contents of Analysis	In addition to all contents of Planning	<div>+</div> RegioGraph Analysis, Planning, or Strategy required for project creation
<ul style="list-style-type: none"> easy data import by postal codes (geocoding) updating of data diverse market analyses (e.g., ABC, customer density, portfolio, charts, score, index etc.) and customizable formatting NEW: calculation of portfolio matrix results exportable as a PDF, MS Excel file, image, etc. 	<ul style="list-style-type: none"> easy data import by address (geocoding) professional sales territory optimization tools planning view with dashboard interface, including map, charts and a table NEW: menu ribbon according to workflow calculation of workload calculation of catchment areas detailed reporting 	<ul style="list-style-type: none"> street segment-level analyses e.g. competition, prospective customers location evaluation and planning with consideration of competitors detailed reporting for micro-data in data analysis mode <i>optional integration of detailed data on end consumers and business potential possible</i> 	<ul style="list-style-type: none"> easy uploading project results to your company's own web server incl. 10 viewers with browser-based access to shared projects from various end devices (extension for additional viewers possible) assign access rights for selected viewers presentation of the diverse market analyses and sales structures on the interactive map overview of all data in an overall table with search, filter, and sort functions NEW: selection using a circle, rectangle, or polygon on a map as well as distance measuring comments with location reference
from €940 per year*	from €2,640 per year*	from €4,500 per year*	from €2,640 per year*

All prices exclude VAT. GfK GeoMarketing's licensing conditions and general terms and conditions apply (www.gfk-geomarketing.com/licensing).

* Price for the first year within a 3-year subscription with an annual increase of max. 3%.

** License to use Bing for 12 months or until the next update.

What are the technical requirements?

Secure environment for your company data

Your data is protected through storage on your company's own web server



client
web browser

RegioGraph Online
REST services

operating system
Windows server with IIS

on-site server
up-to-date server model

System prerequisites

- CPU: Intel Xeon @3.2 GHz (16 processors)
- RAM: 128 GB
- HDD: 200 GB
- Windows server 2016, 64-bit
- Internet Information Services (Version 10.0.14393.0)
- SSL certificate is mandatory
- RegioGraph Online Services 0.11

Current client configuration

- up-to-date browser; Google Chrome recommended

You don't have your own web server?



We've partnered up with cloudeo to provide you with a holistic solution



Ready to use

RegioGraph TeamConnect comes pre-installed on cloudeo's virtual machines



Maximum security for your data

Your company data is securely stored on cloudeo's virtual machines



Regular updates

Your virtual machines will be automatically updated whenever a new version is available



Flexible pricing

The price depends on your number of viewers – starting from less than €2,200 per year



Customer support

If you have problems or questions, you'll get excellent customer support by our experts

We work with market leading companies



DENON



FERRERO



Thomas Sabo



L'ORÉAL®



MEDIA - SATURN

Alcon®



mediserv



Questions?

Contact us at any time.



Your Geomarketing team

 +49 7251 9295 200

 geomarketing@gfk.com

 www.gfk-regiograph.com

More about our solutions:

PRODUCT CATALOG

WEBSHOP